

DESIGN IMPROVEMENT FOR KIMRAY SEAT REMOVAL TOOL

This product notice is to inform you that the Seat Removal Tool will now be socket-style rather than T-handle.

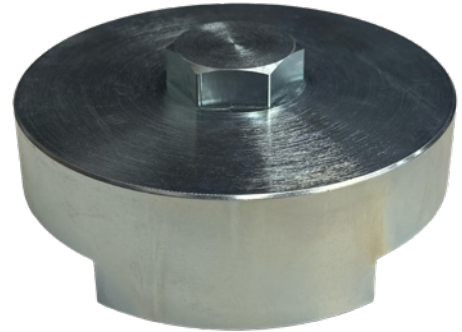
The current Seat Removal Tools for Regulators, Low Pressure Control Valves, and Dump Valves are being updated to socket-style design.

Socket-style tools provide a better experience for users during disassembly and assembly of Kimray regulators and dump valves. There are two primary reasons for this update:

This design allows coupling with different tools to generate the proper leverage and force required for disassembly.

The socket-style tool promotes the use of a calibrated torque wrench, which can be used to target torque specifications during the assembly process.

This product notice immediately affects the following seat removal tools:



Part Number	Product Used On	Connection Size	Trim Size	Body Material
706HTSW	Low Pressure Control Valves	2"	1"	Ductile
	Pneumatically Operated Liquid Dump Valves	6"	---	---
1219SW	Low Pressure Control Valves	3"	1-5/8"	Steel
	Pneumatic Regulators	3"	1-5/8"	Ductile
1219HTSW	Low Pressure Control Valves	3"	1-5/8"	Ductile
	Pneumatic Regulators	3"	1-5/8"	Steel
	Spring Loaded Back Pressure Regulators	3"	1-5/8"	Ductile
1220SW	Low Pressure Control Valves	4"	2"	Steel
	Pneumatic Regulators	4"	2"	Ductile
1220HTSW	Low Pressure Control Valves	4"	2"	Steel
	Pneumatic Regulators	4"	2"	Ductile
1349SW	Low Pressure Control Valves	1"	1/2"	---
	Pneumatic Regulators	1"	---	---
4060SW	Spring Loaded Back Pressure Regulators	2"	1"	Steel
4005SW	Low Pressure Control Valves	2"	1"	Steel
	Spring Loaded Back Pressure Regulators	2"	1"	Ductile