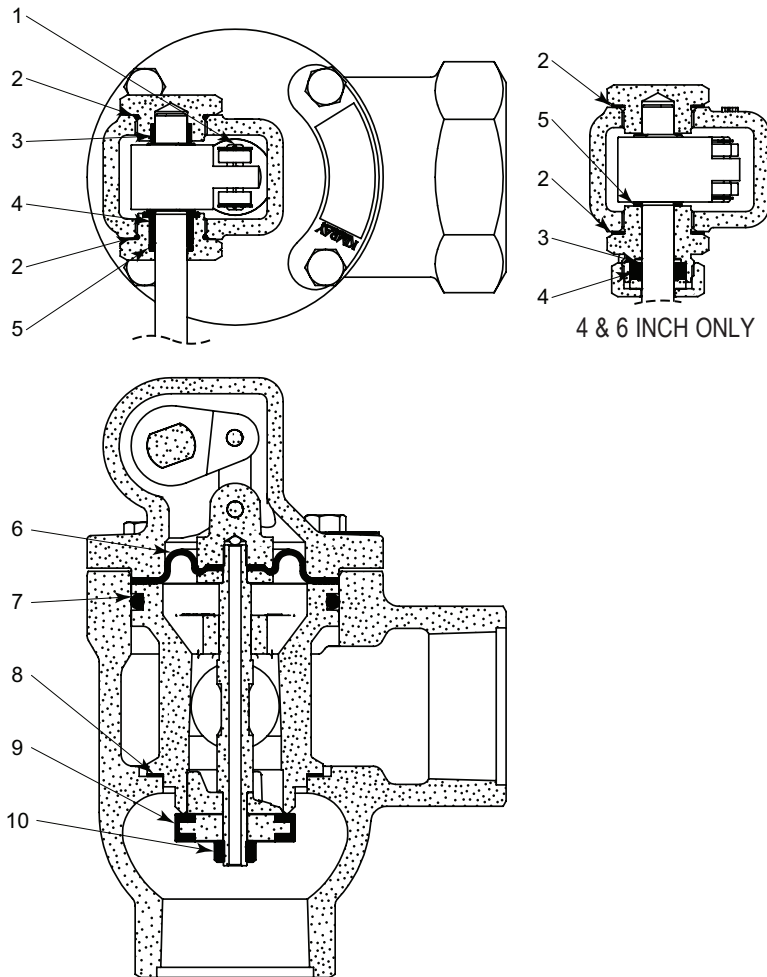


| ITEM | QTY.  | DESCRIPTION   | 2 INCH | 3 INCH | 4 INCH    | 6 INCH     |
|------|-------|---------------|--------|--------|-----------|------------|
| 1    | 4     | Snap Ring     | 941    |        | 975       |            |
| 2    | 2     | Gasket        |        | ----   | 366       | 1789       |
|      | 2     | O-Ring        | 2131   | 5226   |           | ----       |
| 3    | 1     | Packing       | 7662   | 355    | 356       | 1786       |
| 4    | 1     | Bushing       | 7660   | 7592   |           | ----       |
|      | (Qty) | Packing Ring  |        | ----   | 353 x (1) | 1787 x (2) |
| 5    | 1     | O-Ring        | 154    | 491    |           | ----       |
|      | 1     | Thrust Washer |        | ----   | 362       | 1788       |
| 6    | 1     | Diaphragm     | 335    | 336    | 4700      | 4315       |
| 7    | 1     | O-Ring        | 329    | 330    | 331       | 2353       |
| 8    | 1     | Gasket        | 276    | 277    | 309       | 2354       |
| 9    | 1     | Seat          | 7498   | 7499   | 165       | 2356       |
| 10   | 1     | Lock Nut      | 173    |        | 906       | 175        |



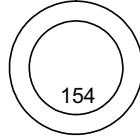
**LIQUID DUMP VALVES LEVER OPERATED**



REPAIR KIT  
2 INCH DIAPHRAGM BALANCED



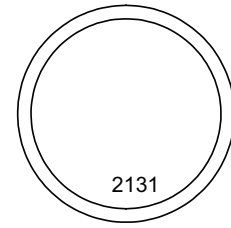
173



154



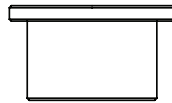
941



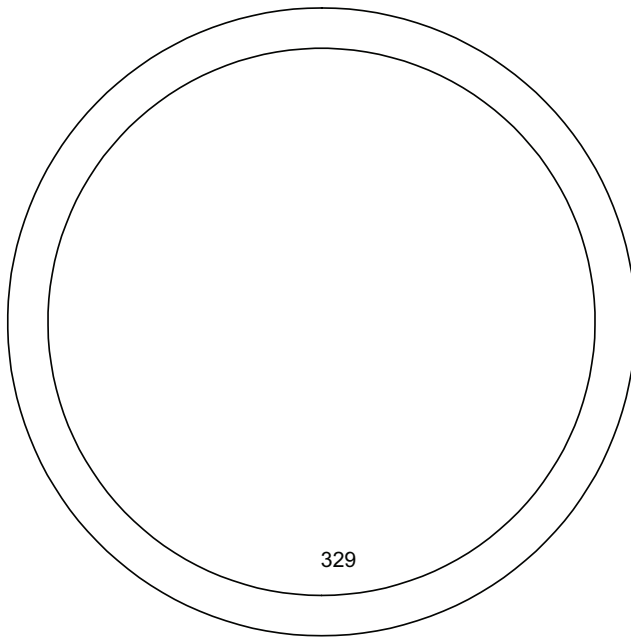
2131



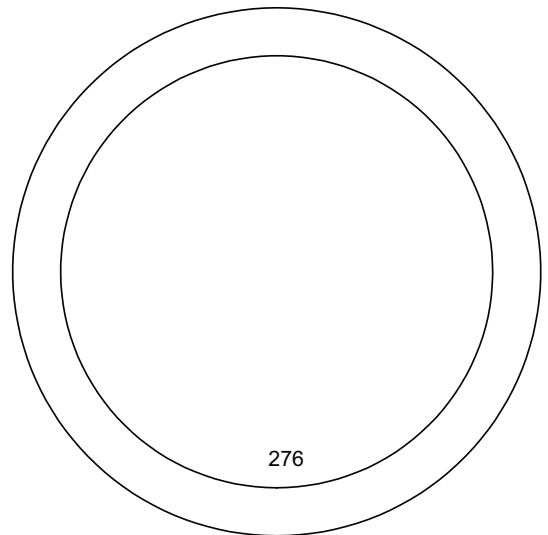
7662



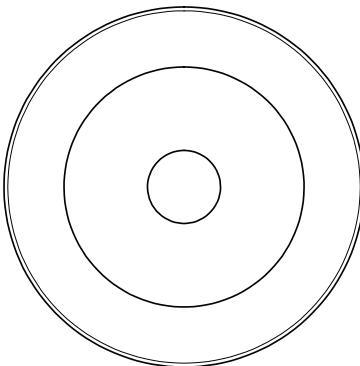
7660



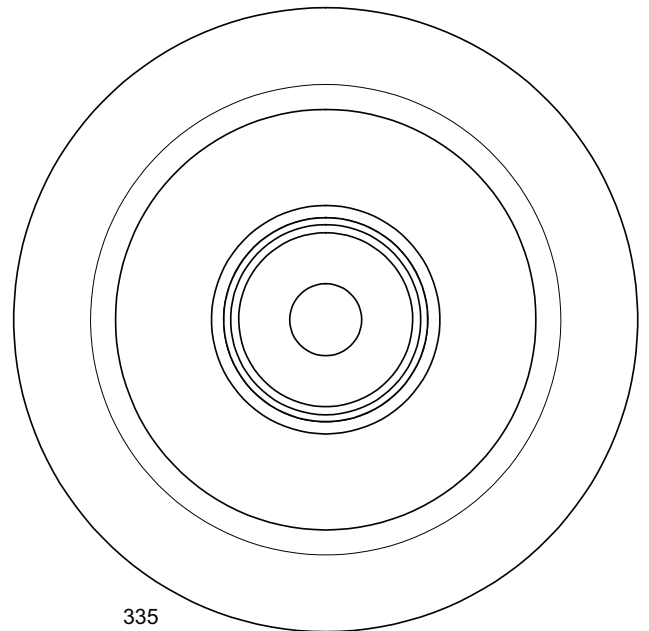
329



276



7498



335

All Pictures shown are for illustration purpose only. Actual product may vary due to product enhancement.