

APPLICATION:

Direct firing of small steam generators by controlling flow of gas through the pilot to the burner. Approximate capacity of pilot is 360 SCFH with 15 psig supply pressure.

Pressure control of larger steam generators by regulating flow of gas through a motor valve. Motor valves are shown and described in Sections E-2 and E-3.

FEATURES:

- Intermittent vent pilot
- Reverse acting
- Throttle action
- Adjustable Steam Pressure

SUPPLY PRESSURE:

5 to 30 psig

OUTPUT PRESSURE:

0 to 20 psig
Adjustable Steam Pressure

STEAM PRESSURE:

15 psig maximum

STEAM TEMPERATURE:

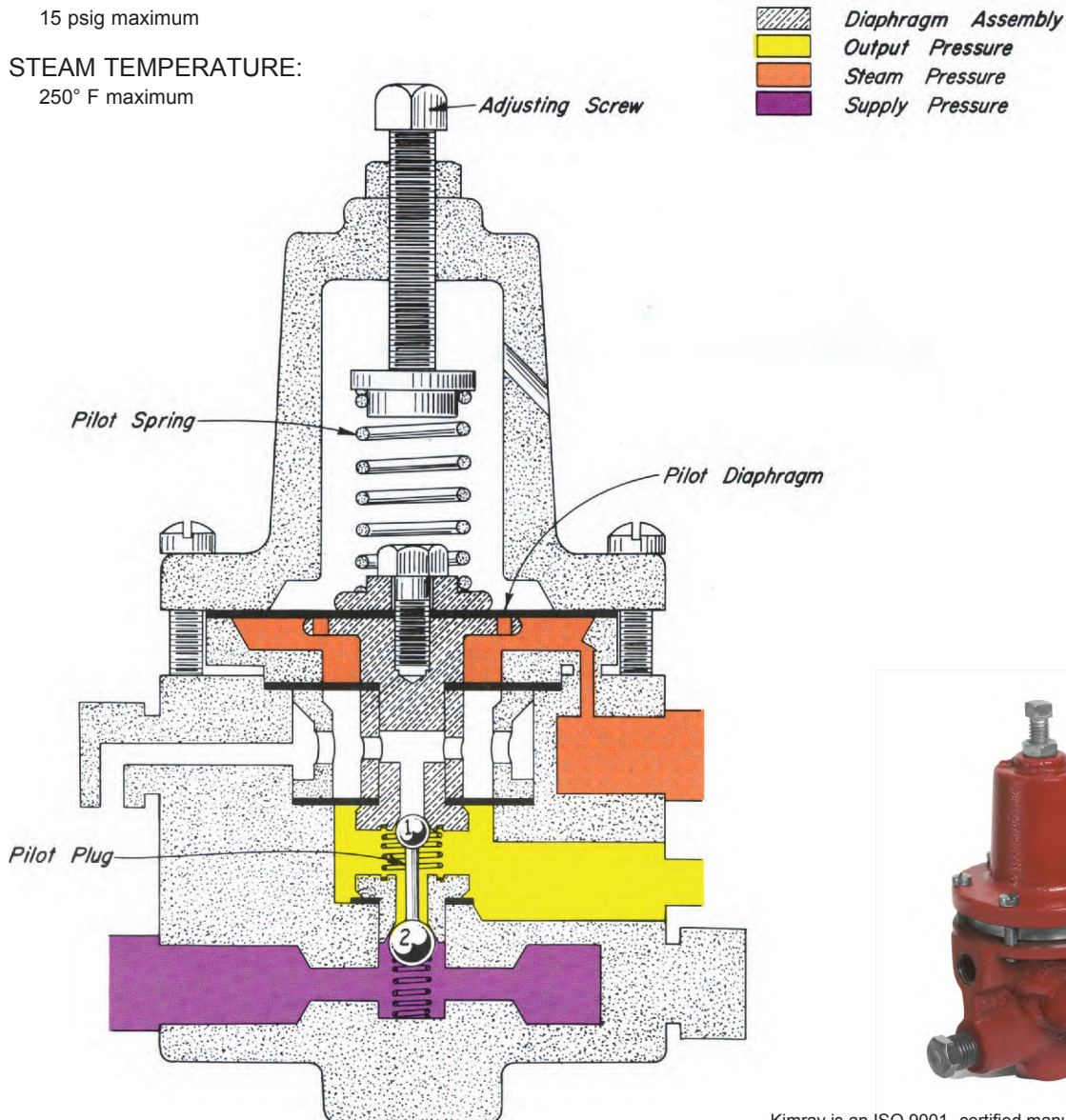
250° F maximum

OPERATION:

The PILOT SPRING loads the upper side of the Diaphragm Assembly and is opposed on the under side by the Steam Pressure (Orange) and the Output Pressure (Yellow).

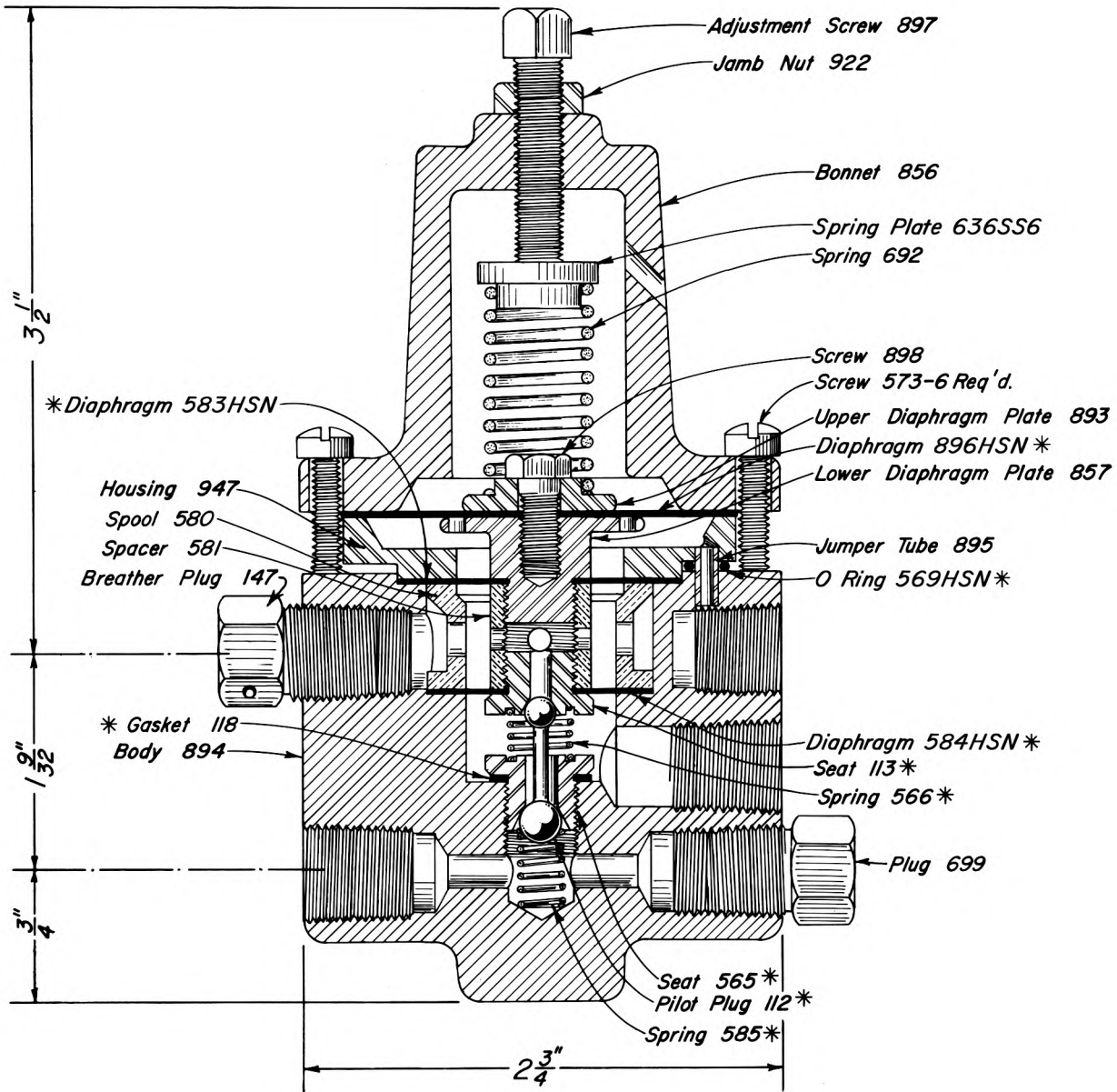
Assume the PILOT SPRING is compressed with the ADJUSTING SCREW set for a desired Steam Pressure (Orange). With the Steam Pressure (Orange) too low, the PILOT SPRING holds the Diaphragm Assembly down, closing the upper seat at Ball 1 (Yellow to Atmosphere) and opening the lower seat at Ball 2 (Violet to Yellow). As the Steam Pressure (Orange) increases to the set pressure, the Diaphragm Assembly moves upward against the PILOT SPRING to first close the lower seat at Ball 2 (Violet to Yellow) and then open the upper seat at Ball 1 (Yellow to Atmosphere).

The 3 PGP PRESSURESTAT may be used to fire small steam generators directly by connecting the Output Pressure (Yellow) to the burner. For larger units the Output Pressure (Yellow) can be used to operate a diaphragm motor valve installed in the burner manifold piping. See Sections E-2 and E-3 for applicable motor valves.



Kimray is an ISO 9001- certified manufacturer.

3 PGP PRESSURESTAT
CAST IRON



PILOTS AVAILABLE:

CAT. NO.	PILOT	MAX W.P.	OPER. PRES.	KIT
YAA	3 PGP	30	30	RXY

NOTES:

All openings are tapped 1/4" N.P.T.

*These parts are recommended spare parts and are stocked as repair kits.