

3PGRA THROTTLE - REVERSE PILOT

APPLICATION:

Any system in which it is desired to reverse and multiply a varying pneumatic signal.

FEATURES:

- Intermittent vent pilot
- Reverse acting
- Throttle action
- Adjustable Steam Pressure

SUPPLY PRESSURE:

5 to 30 psig

OUTPUT PRESSURE:

0 to 20 psig
Adjustable Steam Pressure

VARIABLE PRESSURE (input signal):

0 to 12 psig
30 psig maximum

PRESSURE RATIO:

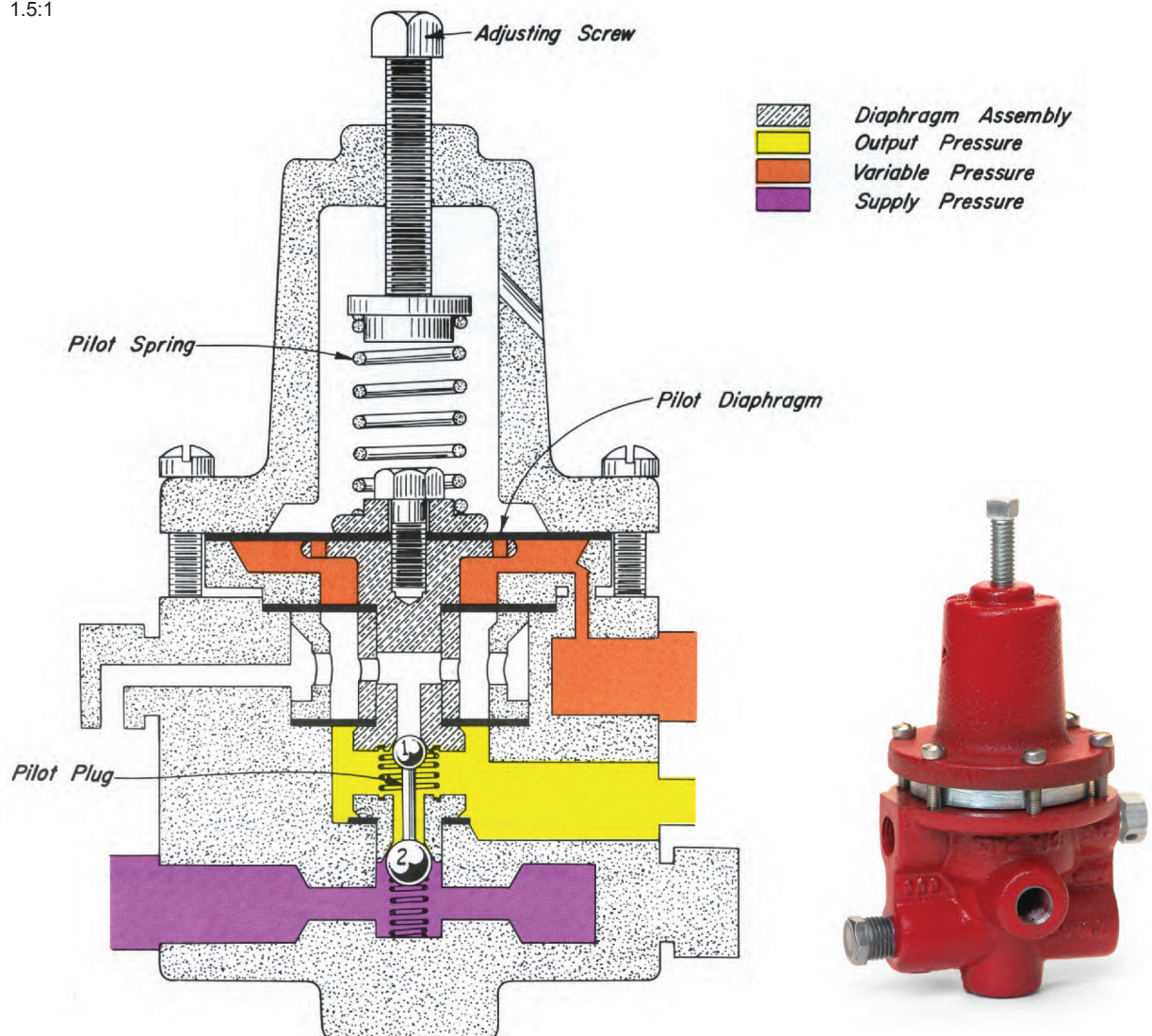
(Orange to Yellow)
1.5:1

OPERATION:

The PILOT SPRING loads the upper side of the Diaphragm Assembly and is opposed by the Variable Pressure (Orange) acting under the PILOT DIAPHRAGM and by the Output Pressure (Yellow).

Assume the PILOT SPRING is compressed with the ADJUSTING SCREW set for a desired Variable Pressure (Orange). With the Variable Pressure (Orange) to low, the PILOT SPRING holds the Diaphragm Assembly down, closing the upper seat at Ball 1 (Yellow to Atmosphere) and opening the lower seat at Ball 2 (Violet to Yellow). As the Variable Pressure (Orange) increases to the set pressure, the Diaphragm Assembly moves upward against the PILOT SPRING to first close the lower seat at Ball 2 (Violet to Yellow) and then open the upper seat at Ball 1 (Yellow to Atmosphere). In this position the Supply Pressure (Violet) inlet is closed and the Output Pressure (Yellow) is vented to atmosphere.

PILOT SPRING #86 is furnished as standard. A heavier spring (Part #692) can be furnished on special order, to raise the Variable Pressure (Orange) from 12 psig to 30 psig.

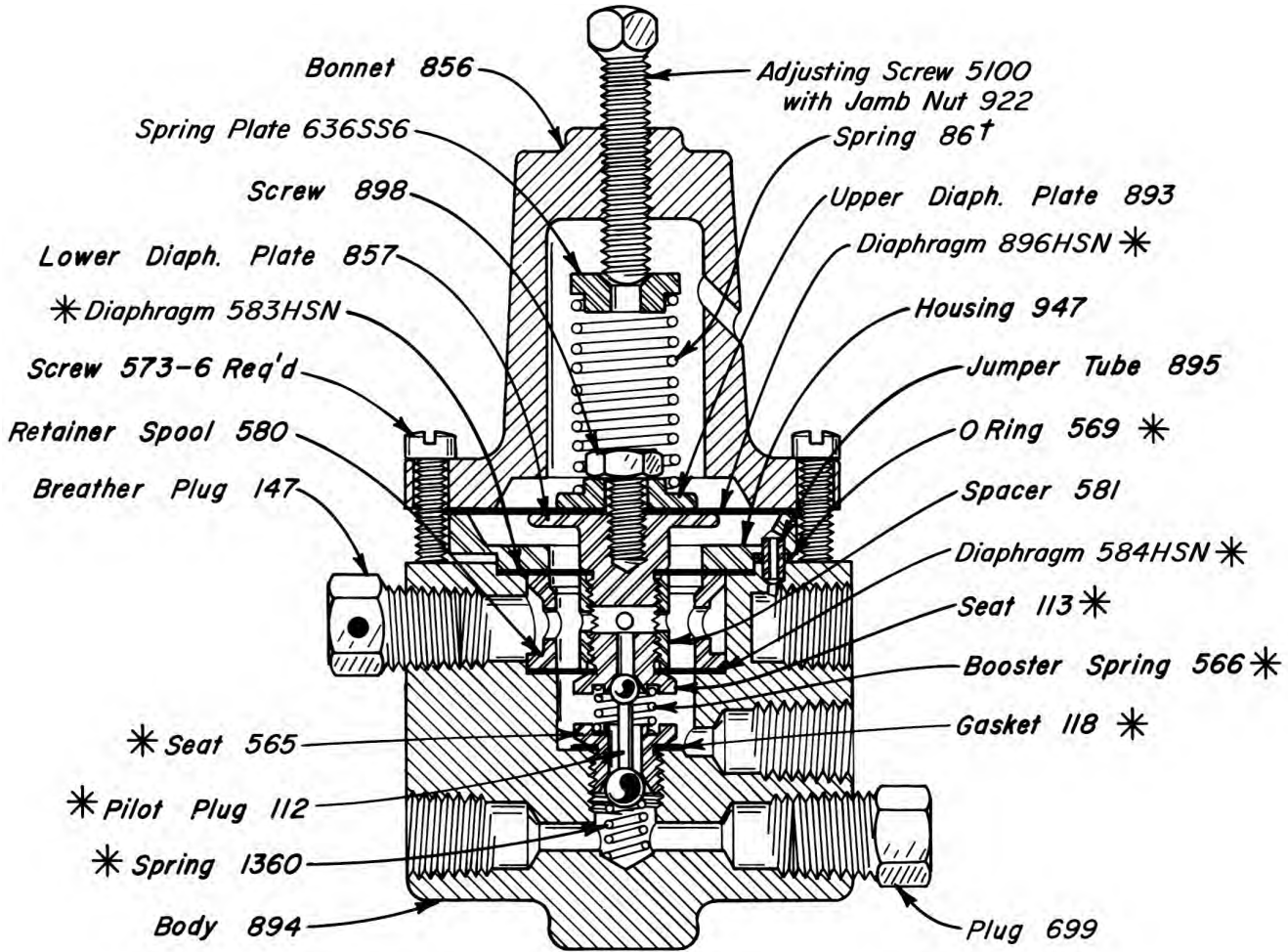


Kimray is an ISO 9001- certified manufacturer.

PILOTS AND ACCESSORIES



3 PGRA THROTTLE-REVERSE PILOT CAST IRON



PILOTS AVAILABLE:

| CAT. NO. | PILOT | MAX W.P. | OPER. PRES. | KIT |
|----------|--------|----------|-------------|-----|
| YAH | 3 PGRA | 30 | 30 | RXY |

NOTES:

†692 heavy spring available upon request.

For dimensions refer to Pg. 70.2 of this section.

All openings are tapped 1/4" N.P.T.

*These parts are recommended spare parts and are stocked as repair kits.

Kimray is an ISO 9001- certified manufacturer.