

APPLICATION:

Manually sends a control signal to open or close a valve using a palm button. Supply is blocked and control signal bled to vent when released.

FEATURES:

- Direct acting
- Mounting bolts for bracket mounting
- Controls a relatively high pressure (300 psig) with minimal manual effort.

SUPPLY PRESSURE:

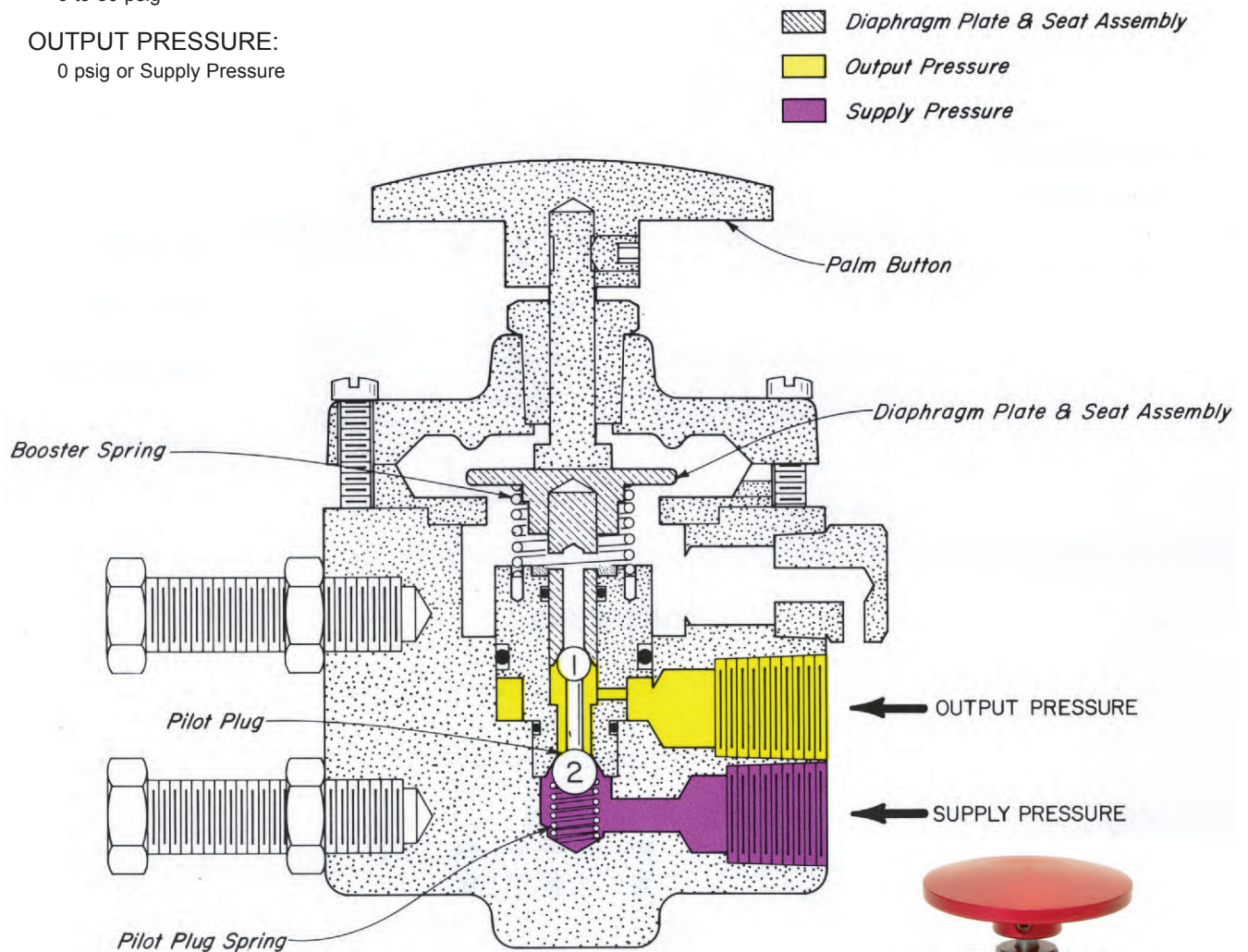
0 to 30 psig

OUTPUT PRESSURE:

0 psig or Supply Pressure

OPERATION:

Manually depressing the PALM BUTTON causes the DIAPHRAGM PLATE and SEAT ASSEMBLY to close the upper seat with Ball 1 of the PILOT PLUG. This blocks the vent, further movement opens the lower seat at Ball 2 of the PILOT PLUG and communicates Supply Pressure to the Output. Releasing the PALM BUTTON reverses the action and allows the PILOT PLUG SPRING to close the lower seat with Ball 2 removing the Supply Pressure from the Output. The BOOSTER SPRING then opens the seat at Ball 1, venting the Output Pressure through the vent.

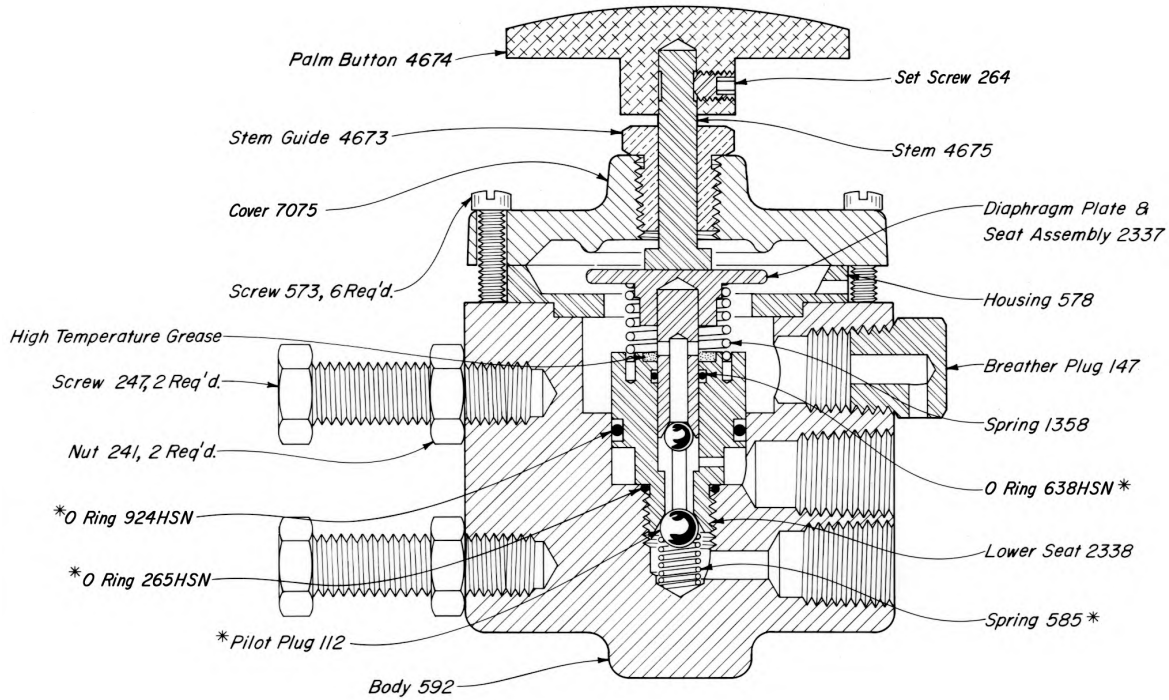


Kimray is an ISO 9001- certified manufacturer.

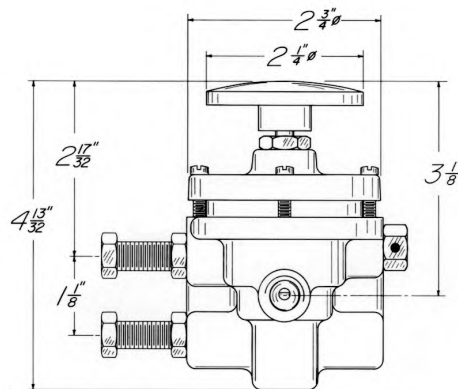
PILOTS AND ACCESSORIES



30 PGMR MANUAL RELAY PILOT DUCTILE IRON



DIMENSIONS



PILOTS AVAILABLE:

CAT. NO.	PILOT	MAX W.P.	OPER. PRES.	KIT
YAL	30 PGMR-D	300	300	RXY

NOTES:

All openings are tapped 1/4" N.P.T.

*These parts are recommended spare parts and are stocked as repair kits.