



FLOAT OPERATED CONTROLLERS

BACK MOUNT PNEUMATIC LEVEL CONTROLLER MODEL PC

APPLICATIONS:

Liquid level controller for oil and gas separators, water knockouts, gas scrubbers and accumulators.

Liquid interface control in fluids of 0.20 minimum differential specific gravities with the standard displacer. Other displacers are available to control liquid interface to 0.10 minimum specific gravities.

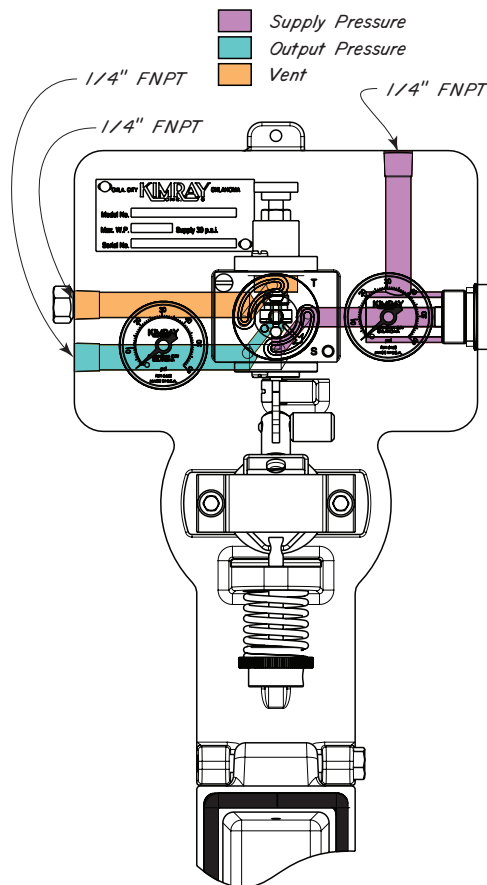
Operates any diaphragm motor valve requiring not more than 30 psig diaphragm pressure.

FEATURES:

- Compact design
- Snap or throttle control in one pilot
- Intermittent vent pilot (Preferred EPA Natural Gas Star BMP)
- NACE MR0175 compliant Wetted Parts
- Certification documents available upon request, specify when ordering
- Low Temp Process Seal (Std.) (-50°F to 300°F) LTV
- Powder coated enclosure
- Vibration tough
- No vent gas in enclosure
- PVC Displacer (Std.) (4000 psi, 175°F);
- 316 SS Displacer (1500 psi, 350°F)
- 40 micron supply gas filter
- 1/4" NPT vented pilot
- Adjustment knob snap range (Patent Pending)
- Simple pilot removal

CERTIFICATIONS:

Canadian Registration Number (CRN):
0H11522.2134567890NTY
Kimray is an ISO 9001- certified manufacturer.



Standard Configuration Code †	Order Code	Line Size	Connection Type	Mounting Type	Supply Pressure	Max. W.P. ††
FPC2S4B1AS	CMM	2"	NPT	Back Mount	5 - 30	4000
FPC2ARB1AS	COT		150RF			285
FPC2BRB1AS	COV		300RF			740
FPC2DRB1AS	COX		600RF			1480
FPC2FRB1AS	COZ		1500RF			3705
FPC2DJB1AS	CSY		600RTJ			1480
FPC2FJB1AS	CTA		1500RTJ			3705
FPC3ARB1AS	CPB	3"	150RF			285
FPC3BRB1AS	CPD		300RF			740
FPC3DRB1AS	CPF		600RF			1480
FPC3ERB1AS	CPH		900RF			2220
FPC3FRB1AS	CRC		1500RF			3705
FPC3DJB1AS	CTC		600RTJ			1480
FPC3EJB1AS	CTE		900RTJ			2220
FPC3HUB1AS	CST	H.U.	3000			
FPC4ARB1AS	CPJ	4"	150RF	285		
FPC4BRB1AS	CPL		300RF	740		
FPC4DRB1AS	CPN		600RF	1480		
FPC4FJB1AS	CRE		1500RF	3705		
FPC4DJB1AS	CTG		600RTJ	1480		
FPC4EJB1AS	CTI		900RTJ	2220		
FPC4FJB1AS	CTK		1500RTJ	3705		
FPC4HUB1AS	CPP	H.U.	1500			
FPC5HUB1AS	CTO	5"	H.U.	1500		
FPC6ERB1AS	CRG	6"	600RF	1480		
FPC6FRB1AS	CRI		1500RF	3705		

NOTES:

For standard & optional seals, metals, material specifications & dimensions see technical data on pages 08:I - 08:VII

† For Corrosive service remove last "S" & replace with "C"

† For KimCoat option remove last "S" & replace with "K"

† For code builder see page 08:00.2

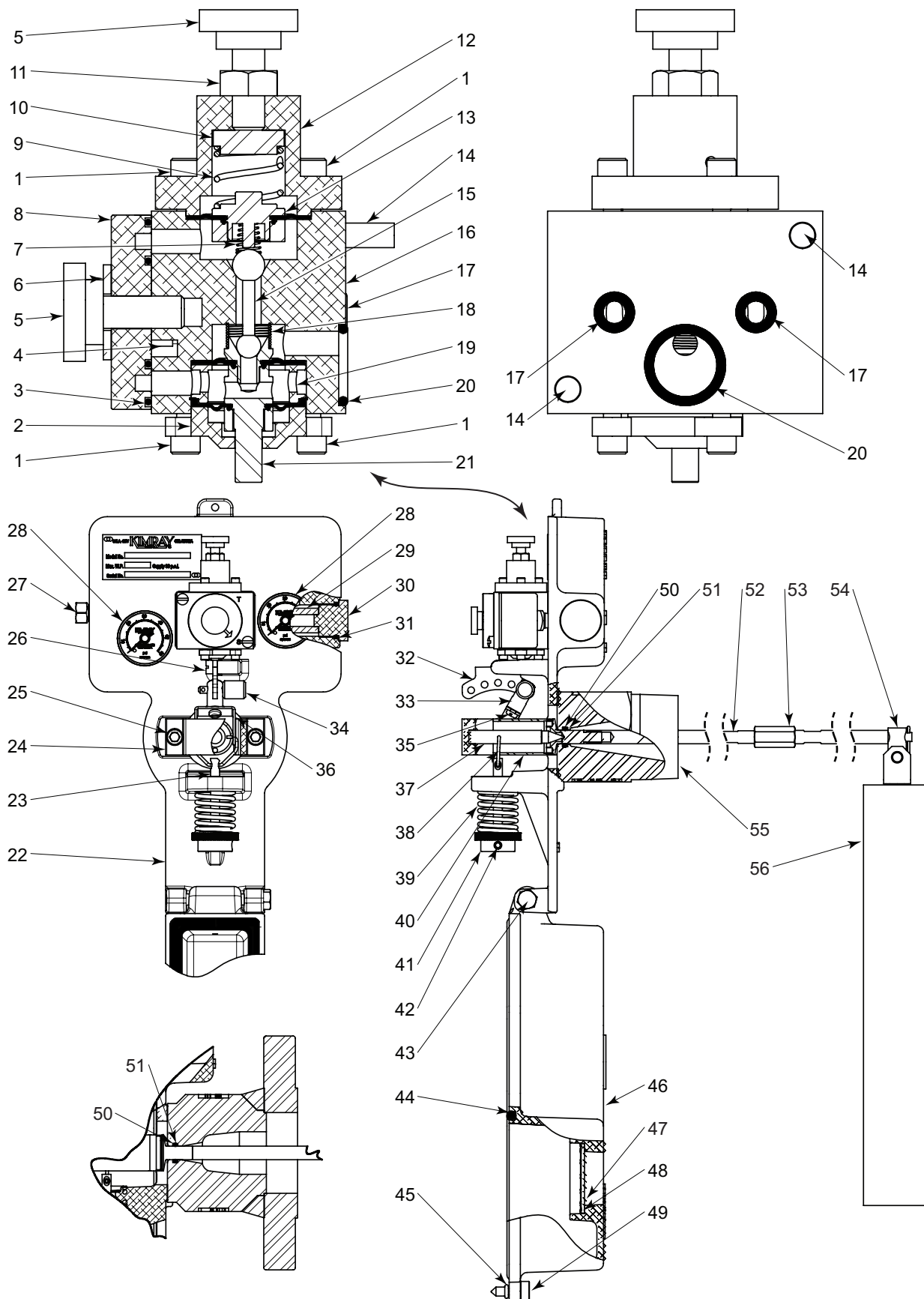
†† Max W.P. values based on -20°F to 100°F.

DISCONTINUED ITEM
Some of the data on this
document may not be current

FLOAT OPERATED CONTROLLERS

KIMRAY INC.®

BACK MOUNT PNEUMATIC LEVEL CONTROLLER MODEL PC PARTS DRAWING



All Pictures shown are for illustration purpose only. Actual product may vary due to product enhancement.

DISCONTINUED ITEM
Some of the data on this
document may not be current



FLOAT OPERATED CONTROLLERS

BACK MOUNT PNEUMATIC LEVEL CONTROLLER MODEL PC PARTS LIST

ITEM	QTY.	DESCRIPTION	PART NO	ITEM	QTY.	DESCRIPTION	PART NO
1	6	Screw	◇ 7189	31	1	O-Ring *	5500V
2	1	Bottom Cap	◇ 5450	32	1	Tangent Arm	6535
3	2	O-Ring	◇ * 5540V	33	1	Link Body	6546
4	1	Selector Pin	◇ 5483	34	1	Pull Pin Assembly	6549
5	2	Thumb Screw	◇ 6780	35	1	Screw	2426
6	1	Lock Washer	◇ 4543	36	1	Yoke	6538
7	1	Throttle Spring	◇ * 5469	37	1	Pivot Rod	6534
8	1	Switch Plate	◇ 6799	38	1	Wire	6533
9	1	Spring	◇ * 7108	39	1	Spring Assembly	
10	1	Spring Plate	◇ 6551			No Rod Extension	6547
11	1	Nut	◇ 6555	with Rod Extension	6547L		
12	1	Upper Cap	◇ 6531	40	1	Waggle Arm Housing	6532
13	1	Diaphragm Assembly	◇ * 7102AS	41	1	Adjusting Knob	6544
14	2	Screw	◇ 4918	42	1	Set Screw	5595
15	1	Pilot Plug	◇ * 112	43	1	Screw	6539
16	1	Pilot Block	◇ 7346	44	1	Gasket	6530
17	2	O-Ring	◇ * 647V	45	1	O-Ring *	6552NP
18	1	Spring	◇ * 5541	46	1	Cover	6511
19	1	Spacer	◇ 5475	47	2	Lens	5447
20	1	O-Ring	◇ * 920V	48	2	Retaining Ring	5509
21	1	Actuator Assembly	◇ * 7096AS	49	1	Cover Screw	6548
22	1	Back Plate	6510	50	1	Teflon Seal Ring *	5545
23	1	Adjusting Screw	6556	51	1	O-Ring *	855LTV
24	1	Retainer	6542	52	1	Waggle Arm	7078S6AS
25	2	Screw	6537	53	1	Coupling	5454
26	1	Screw	5485	54	1	Rod Assembly	7723A
27	1	Breather Plug	147			Optional 6" Arm Extension	5543L6
28	2	Gauge	7156			Optional 12" Arm Extension	5543L12
29	1	Filter	5486	Optional 18" Arm Extension	5543L18		
30	1	Filter Cap	5502				
Repair Kits			RMG	* These parts are recommended spare parts and stocked as repair kits.			
Pilot Assembly			YBU	◇ These parts are stocked as Pilot Assembly			

ITEM	QTY.	DESCRIPTION	PART NUMBER											
			STANDARD						CORROSIVE					
			2 INCH	3 INCH	4 INCH	5 INCH	6 INCH	2 INCH	3 INCH	4 INCH	5 INCH	6 INCH		
55	1	Body	2 INCH	3 INCH	4 INCH	5 INCH	6 INCH	2 INCH	3 INCH	4 INCH	5 INCH	6 INCH		
		MNPT	6559	----	----	----	----	6559SS6 ‡	----	----	----	----		
		150RF	5562BM	5570BM	5575BM	----	----	----	----	----	----	----		
		300RF	5563BM	5555BM	5576BM	----	----	----	----	----	----	----		
		600RF	5564BM	5571BM	5577BM	----	----	----	----	----	----	----		
		900RF	----	5572BM	----	----	----	----	----	----	----	----		
		1500RF	5565BM	6414BM	5579BM	----	----	----	----	----	----	----		
		600RTJ	5568BM	5573BM	5578BM	----	----	----	----	----	----	----		
		900RTJ	----	5574BM	----	----	----	----	----	----	----	----		
		1500RTJ	5569BM	----	----	----	----	----	----	----	----	----		
		Hammer Union	----	5558BM	5551BM	5552BM	----	----	----	----	----			

‡ Coated Parts available with "K" service type

ITEM	QTY.	DESCRIPTION	PART NO	WEIGHT	MAX TEMP	MAX PSI	MIN DIFFERENTIAL SP.GR.	MATERIAL
56	1	Displacers						
		1 7/8" x 12" Lg	7637A	1lb 15oz	180°F	4000	>0.20	PVC
		1 7/8" x 20" Lg	7638A	3lb 5oz	180°F	4000	>0.15	PVC
		2 3/4" x 14 1/4" Lg	7640A	4lb 5oz	180°F	4000	>0.1	PVC
		2 1/2" x 12" Lg	7639A	3lb 0.5oz	180°F	4000	>0.15	PVC
		1 3/4" x 12" Lg	5461SS6	1lb 15oz	500°F	2000	>0.20	316SS
		1 3/4" x 20" Lg	5461SS6L20	3lb 0oz	500°F	2000	>0.17	316SS

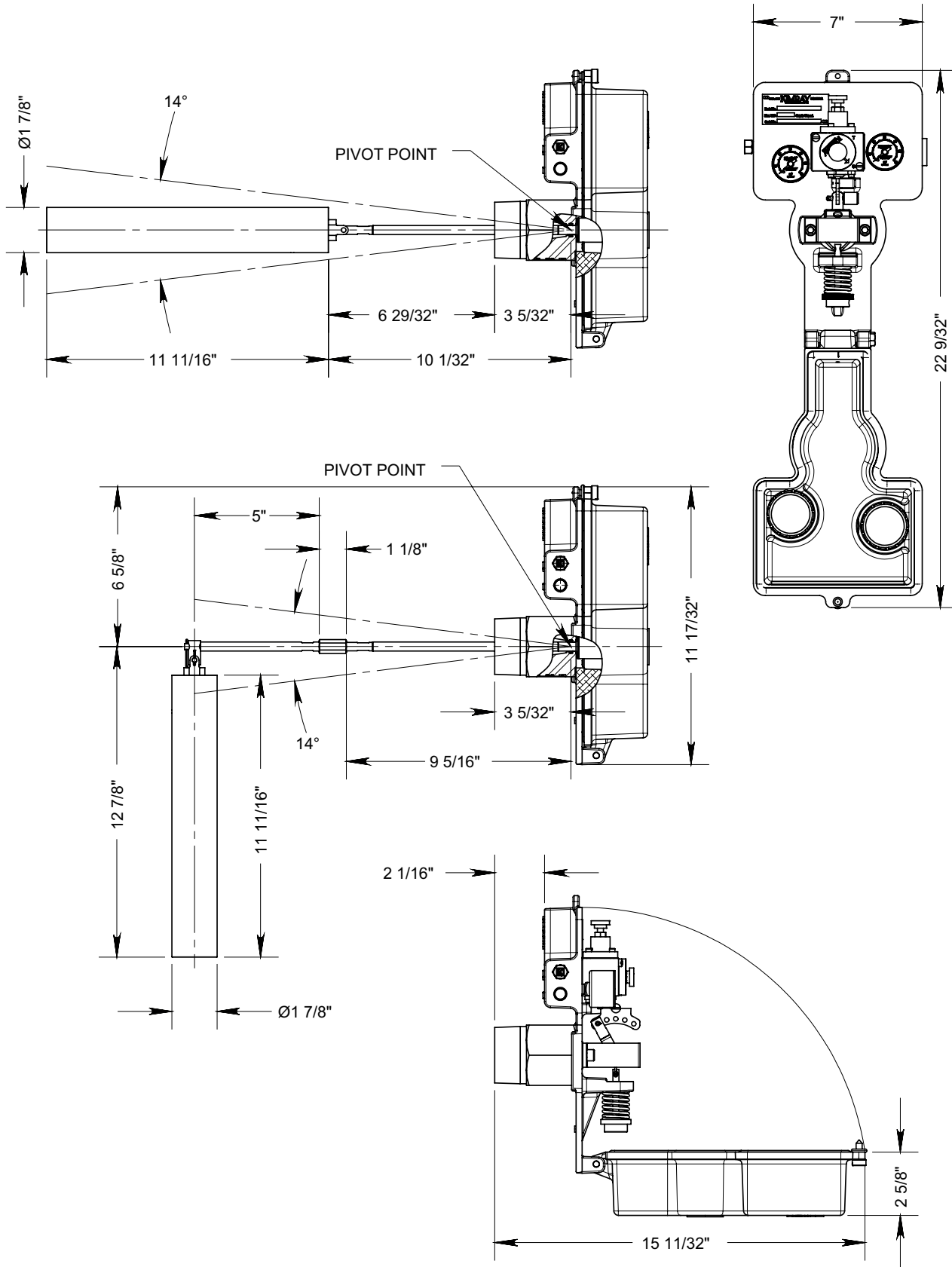
EXTENSION RODS KITS				
Extension Kit	Length	Spring	Coupling	Arm Ext.
CMUL6	6"	6547L	5454	5543L6
CMUL12	12"	6547L	5454	5543L12
CMUL18	18"	6547L	5454	5543L18

DISCONTINUED ITEM
Some of the data on this
document may not be current

FLOAT OPERATED CONTROLLERS

KIMRAY INC.®

DIMENSIONS CONTROLLER BACK MOUNT



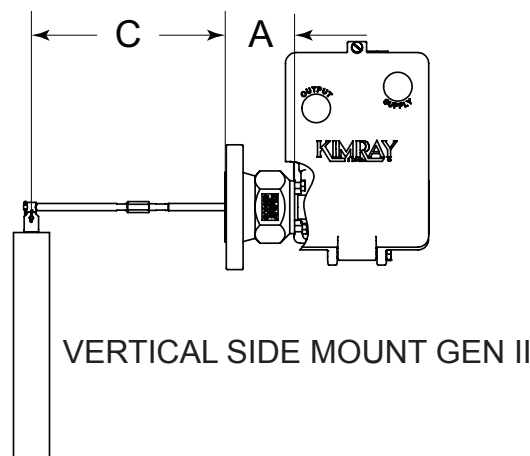
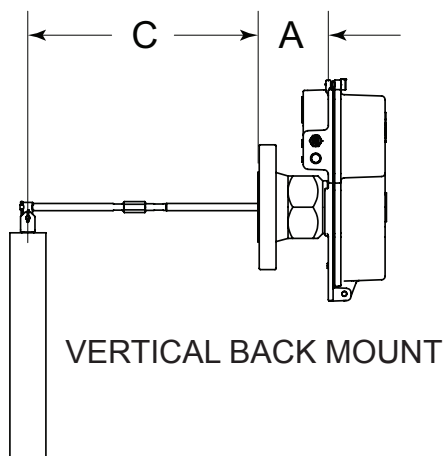
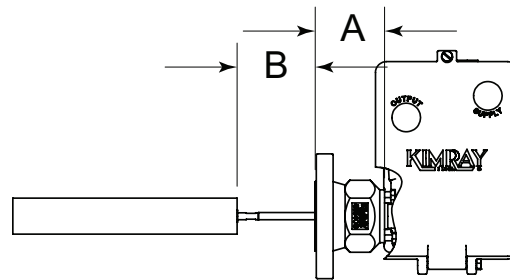
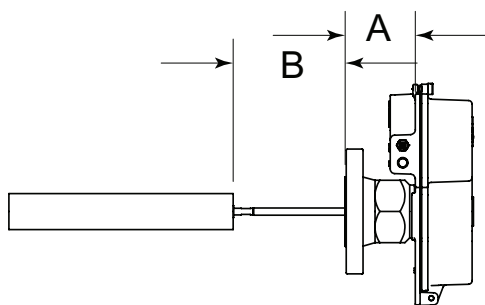
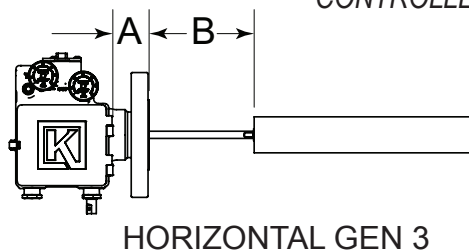
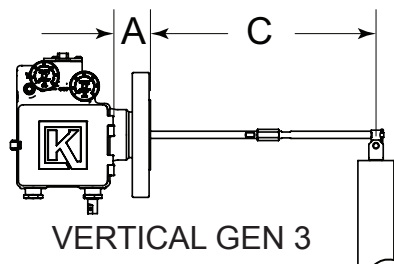
All Pictures shown are for illustration purpose only. Actual product may vary due to product enhancement.

DISCONTINUED ITEM
Some of the data on this
document may not be current



FLOAT OPERATED CONTROLLERS

DIMENSIONS
CONTROLLER FLANGES



FLANGES		150#			300#			600#			900#			1500#			
TYPE	SIZE	A	B	C	A	B	C	A	B	C	A	B	C	A	B	C	
GEN 3	Raised Face	2"	1 11/16	5 3/4	11 15/16	1 29/32	5 15/32	11 3/4	2 3/16	5 1/4	11 7/16	---	---	---	2 41/16	4 3/4	10 15/16
		3"	1 11/16	5 3/4	11 15/16	2 1/16	5 21/16	11 9/16	2 7/16	5	11 3/16	3 3/32	4 3/8	10 9/16	3 13/16	3 4	9 13/16
		4"	1 7/8	5 9/16	11 3/4	2 3/16	5 9/16	11 7/16	2 41/16	4 3/4	10 15/16	2 21/32	4 13/16	11	3 9/32	4 3/16	10 3/8
		6"	---	---	---	---	---	---	---	---	---	---	---	---	4 5/32	3 5/16	9 1/2
	Ring Joint	2"	---	---	---	---	---	---	2 1/4	5 3/16	11 3/8	---	---	---	2 7/16	5	11 3/16
		3"	---	---	---	---	---	---	2 3/16	5 1/4	11 7/16	2 7/16	4 41/16	10 7/8	---	---	---
4"		---	---	---	---	---	---	2 7/16	4 41/16	10 7/8	---	---	---	---	---	---	
GEN II SIDE MOUNT	Raised Face	2"	3 7/16	4 5/8	10 3/4	3 5/8	4 1/16	10 9/16	3 15/16	3 5/8	10 1/4	---	---	---	4 7/16	3 3/16	9 3/4
		3"	3 7/16	4 1/4	10 3/4	3 15/16	3 3/4	10 1/4	4 3/16	3 3/16	10	4 13/16	3 1/16	9 3/8	6 5/16	1 3/8	7 7/8
		4"	3 11/16	3 15/16	10 1/2	3 15/16	3 3/4	10 1/4	4 7/16	3 1/4	9 3/4	5 1/8	2 9/16	9 1/16	5 3/4	1 15/16	8 7/16
		6"	---	---	---	---	---	---	---	---	---	---	---	---	5 7/8	1 13/16	8 5/16
	Ring Joint	2"	---	---	---	---	---	---	4	3 1/2	10 3/16	---	---	---	4 3/16	3 1/2	10
		3"	---	---	---	---	---	---	3 15/16	3 3/4	10 1/4	4 1/2	3 3/16	9 11/16	---	---	---
4"		---	---	---	---	---	---	4 1/2	3 3/16	9 11/16	---	---	---	---	---	---	
BACK MOUNT	Raised Face	2"	3 1/2	6 16/13	12 3/8	5 9/16	3 11/16	12	4	5 7/16	11 7/8	4 1/2	5 13/16	11 3/8	---	---	---
		3"	3 1/2	6 13/16	12 3/8	3 13/16	6 7/16	12	4 1/4	1/16	11 5/8	4 7/8	5 7/16	11	9 1/2	3 15/16	6 5/16
		4"	3 11/16	6 5/8	12 3/16	4	6 5/16	11 7/8	4 1/2	5 13/16	11 3/8	---	---	---	5 1/8	5 3/16	10 3/4
		6"	---	---	---	---	---	---	---	---	---	---	---	---	---	---	---
	Ring Joint	2"	---	---	---	---	---	---	4 1/16	6 1/4	11 13/16	---	---	---	4 1/4	6 1/16	11 5/8
		3"	---	---	---	---	---	---	4	6 5/16	11 7/8	4 9/16	5 3/4	11 5/16	---	---	---
4"		---	---	---	---	---	---	4 9/16	5 3/4	11 5/16	---	---	---	---	---	---	

All Pictures shown are for illustration purpose only. Actual product may vary due to product enhancement.

FLOAT OPERATED CONTROLLERS

SEALS



Table 1 - GEN 3 Seal Options			
Product Type	Part	Standard Material	Optional Material
Pneumatic	Mounting Piece	FKM	AFLAS®, HSN,
	Pilot Seals	FKM	N/A

Table 2 - GEN II Seal Options			
Product Type	Part	Standard Material	Optional Material
Pneumatic & Electric	Mounting Piece	LTV	AFLAS®, HSN, PTFE
Pneumatic	Pilot Seals	FKM	N/A

Table 3 - Level Switch Seal Options			
Product Type	Part	Standard Material	Optional Material
Electric Switch	O-rings	FKM	AFLAS®, HSN, Nitrile
Pneumatic Switch	O-rings	FKM	N/A
	Diaphragm	FKM	LTN

Table 4 - Seal Specifications						
		NITRILE	LOW TEMP NITRILE	HIGHLY SATURATED NITRILE	FKM	AFLAS®
	Kimray Suffix	-	LTN	HSN	V	AF
Resistance	Abrasion	G	G	G-E	G	G
	Acid	F	F	G-E	G-E	E
	Chemical	F	F	F	E	E
	Cold	G	E	G	P	P
	Flame	P	P	P	E	E
	Heat	G	G	E	E	E
	Oil	G-E	G-E	E	E	E
	Ozone	P	P	G	G-E	E
	Set	G	G	G	G-E	P
	Tear	F	F	F	F	P
	Water/Steam	F	F	E	P	G
	Weather	F	F	G	E	E
	CO2	F-G	F-G	G	G	G
	H2S	P	P	F	P	E
	Methanol	F	P	E	P	P
Properties	Dynamic	G	G	G	G	G
	Electrical	F	F	F	F	G-E
	Impermeability	G	G	G	G	G
	Tensile Strength	G	G	G-E	G	F
Temp. Range		-20° to +250°F	-65° to +225°F	-20° to +300°F	-15° to +400°F	+15° to +450°F
		-29° to +121°C	-53° to +107°C	-29° to +149°C	-26° to +204°C	-9° to +232°C
RATINGS: P-POOR, F-FAIR, G-GOOD, E-EXCELLENT						

Table 5 - Material Options			
	Component	Standard Material	Optional Material
Pneumatic GEN3 Level Controllers	Body	Steel (ASTM SA352LCB)	316SS (ASTM A351 CF8M)
	Pilot	Aluminum (ASTM B221 6061-T6)	N/A
	Shaft & Bearing Hubs	Steel (ASTM)	316SS (ASTM A240)
	Bearings	Polyimide filled PTFE	N/A
	Levers	Steel (FLN2C-4005)	N/A
	Displacer	PVC	316SS (ASTM A 240)
	Spring	17-7SS (ASTM A313)	N/A
Pneumatic & Electric GEN II Level Controllers	Body	Steel (ASTM SA352LCB)	316SS (ASTM A351 CF8M)
	Pilot	Aluminum (ASTM B221 6061-T6)	N/A
	Link	303SS (ASTM A582)	N/A
	Tangent Arm	316SS (ASTM A240)	N/A
	Waggle Arm	316SS (ASTM A479)	N/A
	Displacer	PVC	316SS (ASTM A 240)
	Spring	17-7PH Condition C 302SS (ASTM A313)	N/A
Pneumatic Level Switches	Body	Aluminum (ASTM B221 6061-T6)	N/A
	Float	316SS (ASTM A 240)	N/A
External Float Cages	Electronic & Pneumatic Level Switch Float Cage	Steel (ASTM SA352LCB)	316SS (ASTM A351 CF8M)
	Horizontal GEN II Float Cage	ASTM A-106 GR. B	N/A
	Vertical External GEN II Float Cage	SA-106B, SA-234 WPB, SA-516-70	N/A

FLOAT OPERATED CONTROLLERS



CODE BUILDER F SERIES (LEVEL CONTROLS)

Series:

F = Float Operated Controllers

Model:

PC = GEN II Pneumatic Level Controller
EC = Electric Level Controller (Back Mount only)
PL = GEN 3 Pneumatic Level Controller

Connection Size:

2 = 2 NPS
3 = 3 NPS
4 = 4 NPS
5 = 5 NPS (HU only)
6 = 6 NPS

End Connection:

S4 = 4000 psi MNPT - 2 inch only

AR = 150 RF
BR = 300 RF
DR = 600 RF
ER = 900 RF
FR = 1500 RF
DJ = 600 RTJ
EJ = 900 RTJ
FJ = 1500 RTJ
HU = Hammer Union - 3,4,5 inch only
GV = Grooved - 2 inch L & R only (PC & EC only)

Mounting Type:

L = Left Side Mount
R = Right Side Mount
B = Back Mount (PC & EC only)

Displacer Type:

Displacer Extensions:

A = None
B = 6 inch
C = 12 inch
D = 18 inch

1 = 1 7/8 x 12	Poly 4000 psi
2 = 1 7/8 x 20	
3 = 2 3/4 x 14 1/4	
4 = 2 1/2 x 12	
5 = 1 7/8 x 5 11/16	
6 = 1 3/4 x 12	316SS 2000 psi
7 = 1 3/4 x 20	

Service Type:

S = Standard LCC body
C = Corrosive (S6 body)

F PC 2 S4 B 1 A S

Options: Additional cost and lead times will apply
If multiple options required input in sequential order
Leave blank if no options required

1 = NACE Certification (Corrosive Option Only)
2 = Hydrostatic Test Certification
3 = MTR (Shell Components)
A = AFLAS Elastomer
H = HSN Elastomer
X = Export (Hydrostatic test, MTR & 3.1)

Not all selections available on all products listed.
See product pages 08:10.1 - 08:30.3 for available options