

APPLICATIONS:

Liquid level controller for oil and gas separators, water knock-outs, gas scrubbers and accumulators.

Liquid interface control in fluids of 0.20 minimum differential specific gravities with the standard displacer. Other displacers are available to control liquid interface to 0.10 minimum specific gravities.

Operates any diaphragm motor valve requiring not more than 30 psig diaphragm pressure. See sections E1, E2, E3, and E4 for diaphragm operated motor valves.

FEATURES:

- Compact design
- Snap or throttle control in one pilot
- Intermittent vent pilot (Preferred EPA Natural Gas Star BMP)
- Vent Rate (@ 30 psi - 0.4 scfd snap; 0.6 scfd throttle)
- NACE MR0175 compliant Wetted Parts
- Certification documents Available upon request, specify when ordering
- Low Temp Process Seal (Std.) (-50°F to 300°F)
- Powder coated enclosure
- Vibration tough
- No vent gas in Enclosure
- PVC Displacer (Std.) (4000 psi, 175°F);
- 316 SS Displacer (1500 psi, 350°F)
- 40 micron supply gas filter
- 1/4" NPT vented pilot
- Simple pilot removal

OPERATION:

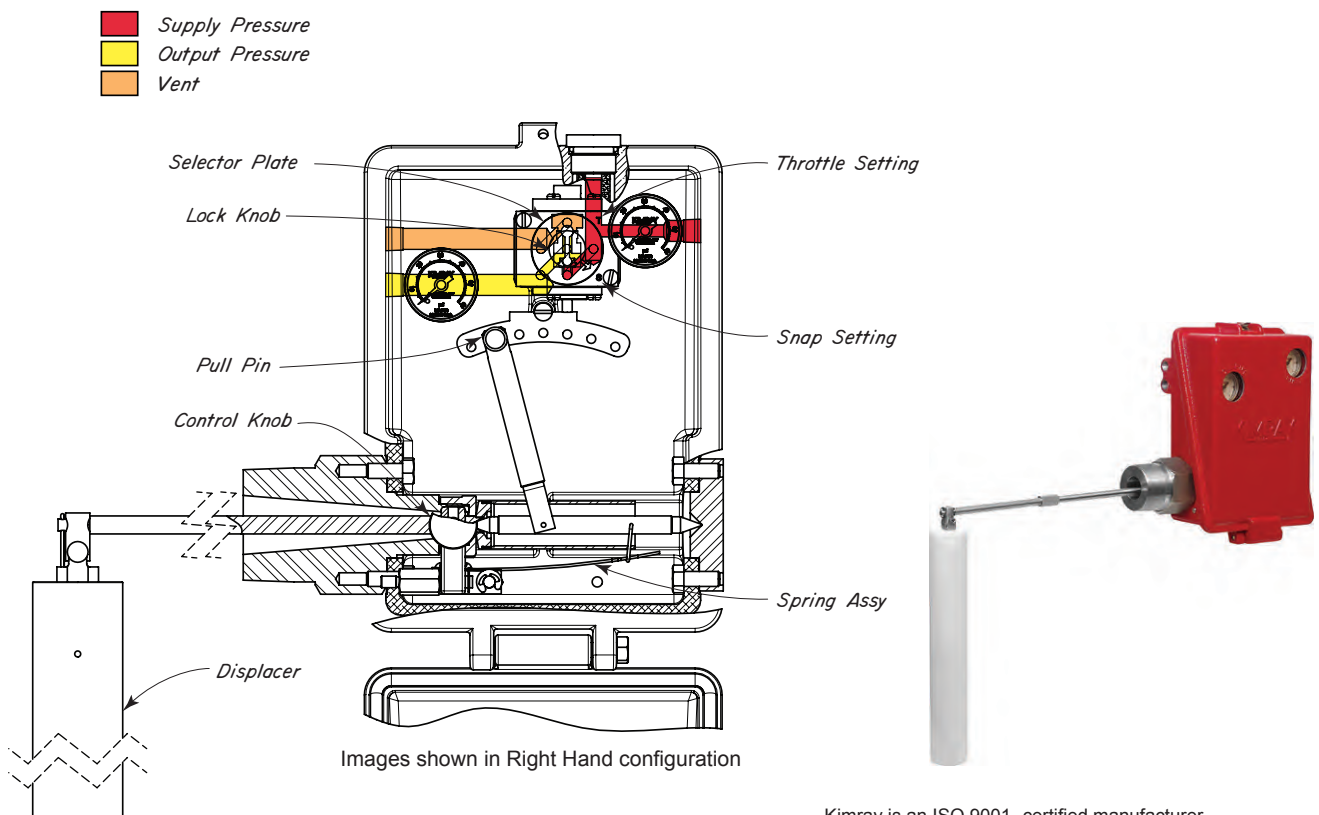
The GEN II Side Mount Liquid Level Controller consists of a DISPLACER for monitoring the changing liquid level, a SPRING for counterbalancing the weight of the DISPLACER, a WAGGLE ARM to transmit DISPLACER movement, a CASE upon which the controller mechanism is mounted, a 30 psig PILOT, a LINK and TANGENT ARM for setting the pilot sensitivity and direct/indirect action of the controller.

The color cross section of the pilot is shown identifying the supply, output and vent connections. In SNAP SERVICE the SELECTOR PLATE is position to the "S". To operate a Pressure Opening Motor Valve, the PULL PIN is place in the outer most hole of the TANGENT ARM right of the PIVOT. As the vessel liquid rises to partially submerge the DISPLACER, the displaced volume of liquid causes the counterbalance spring to exert a downward force at the end of the WAGGLE ARM HOUSING. The resulting downward movement of the LINK moves the TANGENT ARM downward from the ACTUATOR of the PILOT. The generated force of the DISPLACER continues until it activates and SNAPS the PILOT on. YELLOW OUTPUT pressure opens the Pressure Opening Motor Valve allowing the vessel liquid to drain.

As the vessel liquid lowers, the DISPLACER flexes the COUNTERBALANCE SPRING, causing an upward force. The WAGGLE ARM transmits the action through the linkage to the ACTUATOR on the PILOT. The force on the ACTUATOR of the PILOT continues to increase until the PILOT SNAPS off. The YELLOW OUTPUT pressure is vented through the PILOT allowing the Motor Valve to close.

The TANGENT ARM can be adjusted to increase or decrease the SNAP RANGE from 5" to 10" in water. Moving the PULL PIN inward will increase the SNAP RANGE.

For THROTTLE mode the LOCK KNOB is loosened and the SELECTOR PLATE is moved from the "S" position to the "T" position. The PULL PIN is placed left of the PIVOT for a Pressure Open Motor Valve and right of the PIVOT for a Pressure Close Motor Valve.



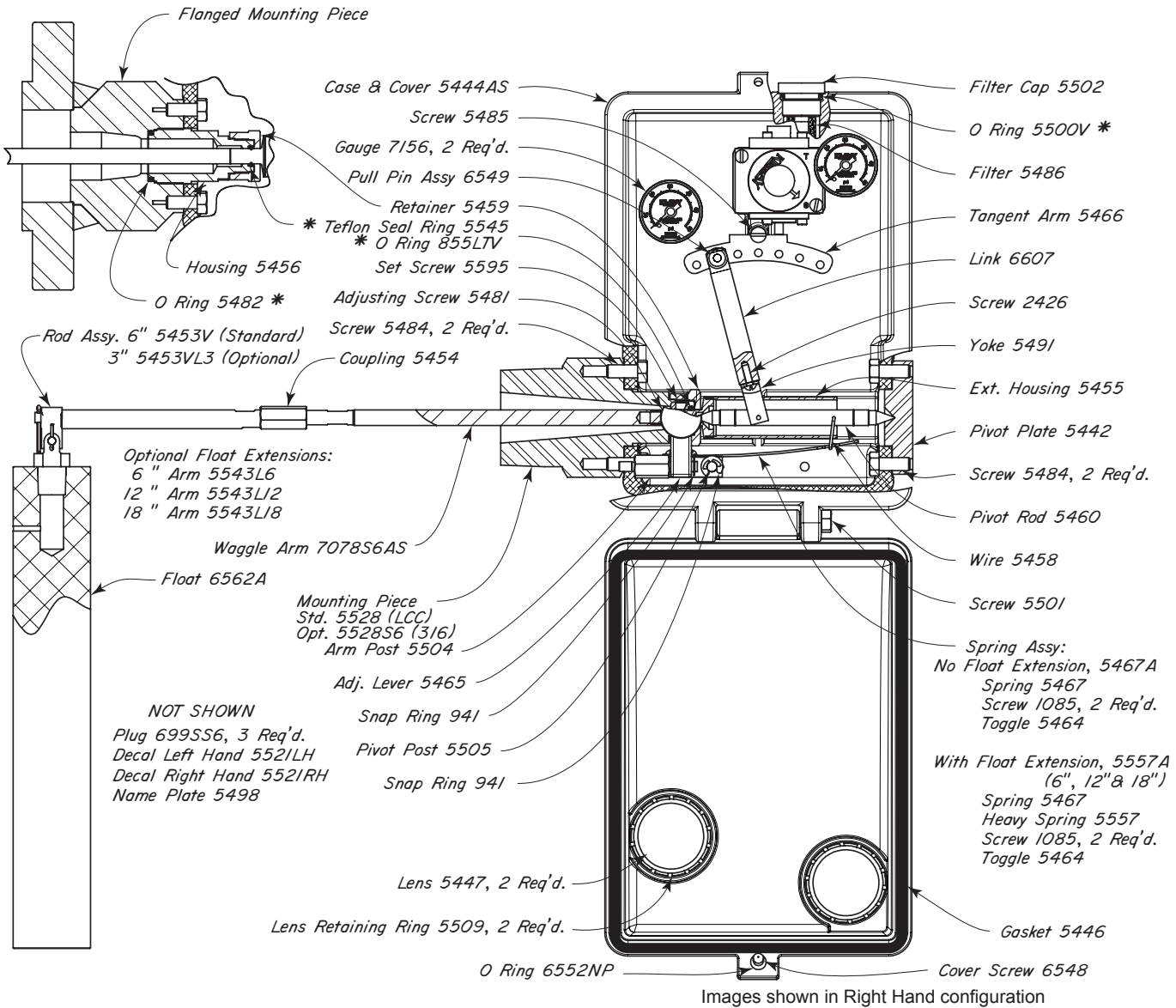
Images shown in Right Hand configuration

Kimray is an ISO 9001- certified manufacturer.

FLOAT OPERATED LEVEL CONTROLLER



GEN II
LCC, SS6 STEEL BODY



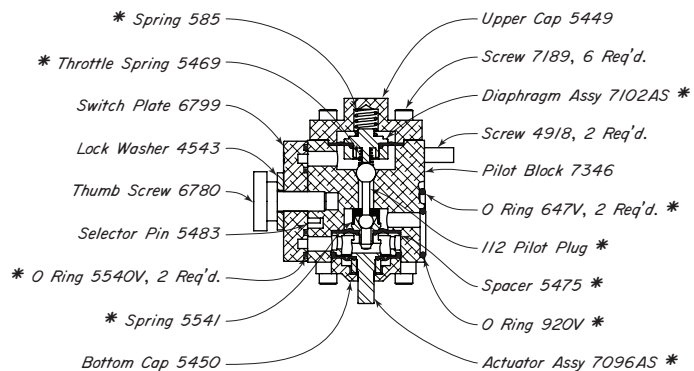
CONTROLLERS AVAILABLE:

| PART NO. | BODY CONNECTION | MODEL NO. | SUPPLY PRES. | MAX ^{††} W.P. | REP. KIT |
|----------|-----------------|--------------------|--------------|------------------------|----------|
| CMK | 2" NPT | GEN II LLC RH | 5-30 | 4000 | RMD |
| CML | 2" NPT | GEN II LLC LH | 5-30 | 4000 | RMD |
| CQM | 2" NPT | GEN II LLC RH HANG | 5-30 | 4000 | RMD |
| CQN | 2" NPT | GEN II LLC LH HANG | 5-30 | 4000 | RMD |

NOTES:

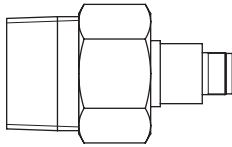
*These parts are recommended spare parts and are stocked as repair kits.
For optional Bodies, Float Assemblies & Float cages see Accessories on pages C1:40.1 - C1:40.6
For standard & optional Seals, Metals, Material specifications & Dimensions see Technical Data on pages C1:1 - C1:V
†† Working Pressure based on -20°F to 100°F operating temperature. See page C1:VI for temps above 100°F

YBT PILOTS 30 psig MAX W.P.

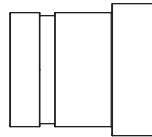


Kimray is an ISO 9001- certified manufacturer.

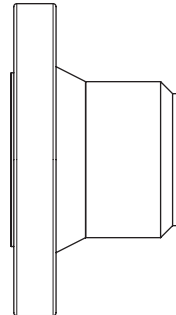
2" NPT (STD)



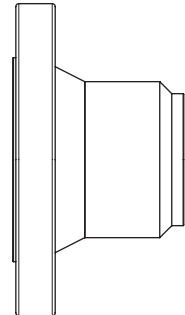
GROOVED



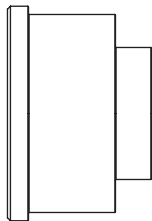
RF FLANGED



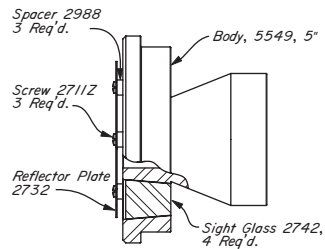
RTJ FLANGED



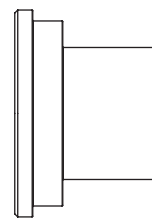
HAMMER UNION



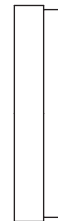
HAMMER UNION
(w/Sight Glass)



HAMMER UNION
(w/o Sight Glass)



ADAPTER



| PART NO. | BODY | MAX. W.P. @ 100° F |
|----------|-----------------------|--------------------|
| 5528 | 2" NPT GEN II | 4000 |
| 5528S6 | 2" NPT GEN II SS6 | 4000 |
| 5562 | 2" 150 RF GEN II | 285 |
| 5563 | 2" 300 RF GEN II | 740 |
| 5564 | 2" 600 RF GEN II | 1480 |
| 5565 | 2" 900/1500 RF GEN II | 2220 |
| 5568 | 2" 600 RTJ GEN II | 1480 |
| 5569 | 2" 1500 RTJ GEN II | 3705 |
| 5570 | 3" 150 RF GEN II | 285 |
| 5555 | 3" 300 RF GEN II | 740 |
| 5571 | 3" 600 RF GEN II | 1480 |
| 5572 | 3" 900 RF GEN II | 2220 |
| 6414 | 3" 1500 RF GEN II | 3705 |

| PART NO. | BODY | MAX. W.P. @ 100° F |
|----------|--------------------------|--------------------|
| 5573 | 3" 600 RTJ GEN II | 1480 |
| 5574 | 3" 900 RTJ GEN II | 2220 |
| 5558 | 3" H.U. w/o SG GEN II UN | 3000 |
| 5575 | 4" 150 RF GEN II | 285 |
| 5576 | 4" 300 RF GEN II | 740 |
| 5577 | 4" 600 RF GEN II | 1480 |
| 5578 | 4" 600 RTJ GEN II | 1480 |
| 5579 | 4" 1500 RF GEN II | 3705 |
| 5551 | 4" H.U. w/o SG | 1500 |
| 2174 | 4" GRV. X 2" NPT ADAPTER | 2000 |
| 5552 | 5" H.U. w/o SG GEN II UN | 1500 |
| 5580 | 6" 1500 RF GEN II | 3705 |

FLOAT OPERATED LEVEL CONTROLLER



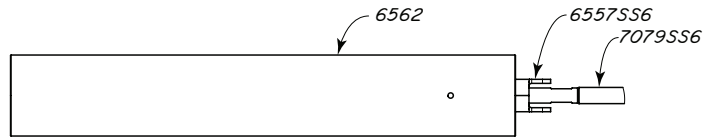
GEN II
FLANGED BODY OPTIONS.

| PNEUMATIC - LEFT HAND SIDE MOUNT | | | | | | | |
|----------------------------------|-----------------|--|--------------|------------------|----------|----------------|--|
| PART NO. | BODY CONNECTION | MODEL NO | SUPPLY PRES. | MAX W.P. @ 100°F | REP. KIT | MOUNTING PIECE | |
| CNB | 2" 150RF | GEN II LLC LH | 0-30 | 285 | RMD | 5562 | |
| COC | 2" 150RF | GEN II LLC LH WITH HANGER | 0-30 | 285 | RMD | 5562 | |
| CNF | 2" 300RF | GEN II LLC LH | 0-30 | 740 | RMD | 5563 | |
| CNJ | 2" 600RF | GEN II LLC LH | 0-30 | 1480 | RMD | 5564 | |
| CRT | 2" 600RTJ | GEN II LLC LH | 0-30 | 1480 | RMD | 5568 | |
| CNN | 2" 900/1500RF | GEN II LLC LH | 0-30 | 2220 | RMD | 5565 | |
| CRX | 2" 1500RTJ | GEN II LLC LH | 0-30 | 3705 | RMD | 5569 | |
| CNR | 3" 150RF | GEN II LLC LH | 0-30 | 285 | RMD | 5570 | |
| CNV | 3" 300RF | GEN II LLC LH | 0-30 | 740 | RMD | 5555 | |
| CNZ | 3" 600RF | GEN II LLC LH | 0-30 | 1480 | RMD | 5571 | |
| CSB | 3" 600RTJ | GEN II LLC LH | 0-30 | 1480 | RMD | 5573 | |
| COE | 3" 900RF | GEN II LLC LH | 0-30 | 2220 | RMD | 5572 | |
| CSF | 3" 900RTJ | GEN II LLC LH | 0-30 | 2220 | RMD | 5574 | |
| CPR | 3" 1500RF | GEN II LLC LH | 0-30 | 3705 | RMD | 6414 | |
| CWE | 3" Hammer Union | GEN II LLC LH W/O SIGHT GLASS W/ THREAD 4 1/2" - 4 ACME | 0-30 | 3000 | RMD | 5558 | |
| COI | 4" 150RF | GEN II LLC LH | 0-30 | 285 | RMD | 5575 | |
| COM | 4" 300RF | GEN II LLC LH | 0-30 | 740 | RMD | 5576 | |
| COQ | 4" 600RF | GEN II LLC LH | 0-30 | 1480 | RMD | 5577 | |
| CSJ | 4" 600RTJ | GEN II LLC LH | 0-30 | 1480 | RMD | 5578 | |
| CTY | 4" 900RF | GEN II LLC LH | 0-30 | 2220 | RMD | 7184 | |
| CPV | 4" 1500RF | GEN II LLC LH | 0-30 | 3705 | RMD | 5579 | |
| CTV | 4" Hammer Union | GEN II LLC LH W/O SIGHT GLASS W/ 4 1/2 - 8 UN-2B THREAD | 0-30 | 1500 | RMD | 5551 | |
| CQZ | 4" Hammer Union | GEN II LLC LH W/O SIGHT GLASS W/ THREAD 4 1/2" - 6 ACME - 2G | 0-30 | 1500 | RMD | 5551 | |
| CPZ | 6" 1500RF | GEN II LLC LH | 0-30 | 3705 | RMD | 5580 | |

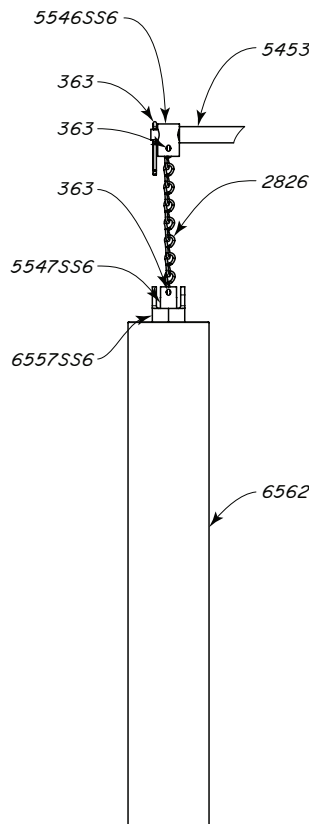
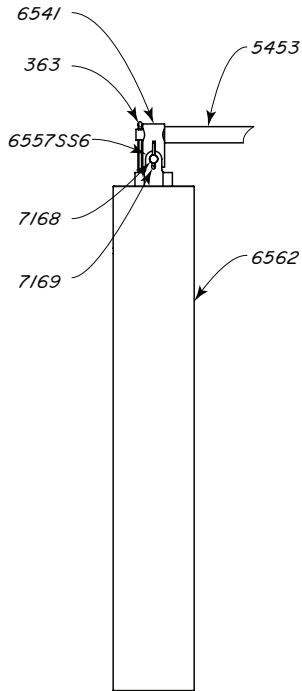
Kimray is an ISO 9001- certified manufacturer.

| PNEUMATIC - RIGHT HAND SIDE MOUNT | | | | | | |
|-----------------------------------|-----------------|---|--------------|------------------|----------|----------------|
| PART NO. | BODY CONNECTION | MODEL NO | SUPPLY PRES. | MAX W.P. @ 100°F | REP. KIT | MOUNTING PIECE |
| CNA | 2" 150RF | GEN II LLC RH | 0-30 | 285 | RMD | 5562 |
| CNE | 2" 300RF | GEN II LLC RH | 0-30 | 740 | RMD | 5563 |
| CNI | 2" 600RF | GEN II LLC RH | 0-30 | 1480 | RMD | 5564 |
| CRS | 2" 600RTJ | GEN II LLC RH | 0-30 | 1480 | RMD | 5568 |
| CNM | 2" 900/1500RF | GEN II LLC RH | 0-30 | 2220 | RMD | 5565 |
| CRW | 2" 1500RTJ | GEN II LLC RH | 0-30 | 3705 | RMD | 5569 |
| CTS | 2" Grooved | GEN II LLC RH | 0-30 | 2000 | RMD | 5548 |
| CNQ | 3" 150RF | GEN II LLC RH | 0-30 | 285 | RMD | 5570 |
| CNU | 3" 300RF | GEN II LLC RH | 0-30 | 740 | RMD | 5555 |
| CNY | 3" 600RF | GEN II LLC RH | 0-30 | 1480 | RMD | 5571 |
| CSA | 3" 600RTJ | GEN II LLC RH | 0-30 | 1480 | RMD | 5573 |
| COD | 3" 900RF | GEN II LLC RH | 0-30 | 2220 | RMD | 5572 |
| CSE | 3" 900RTJ | GEN II LLC RH | 0-30 | 2220 | RMD | 5574 |
| CPQ | 3" 1500RF | GEN II LLC RH | 0-30 | 3705 | RMD | 6414 |
| CQJ | 3" Hammer Union | GEN II LLC RH W/O SIGHT GLASS W/ THREAD 4 1/2" - 4 ACME | 0-30 | 3000 | RMD | 5558 |
| COH | 4" 150RF | GEN II LLC RH | 0-30 | 285 | RMD | 5575 |
| COL | 4" 300RF | GEN II LLC RH | 0-30 | 740 | RMD | 5576 |
| COP | 4" 600RF | GEN II LLC RH | 0-30 | 1480 | RMD | 5577 |
| CSI | 4" 600RTJ | GEN II LLC RH | 0-30 | 1480 | RMD | 5578 |
| CWG | 4" 900RF | GEN II LLC RH | 0-30 | 2220 | RMD | 7184 |
| CPU | 4" 1500RF | GEN II LLC RH | 0-30 | 3705 | RMD | 5579 |
| CTT | 4" Hammer Union | GEN II LLC RH W/O SIGHT GLASS W/ 4 1/2" - 8 UN-2B THREAD | 0-30 | 1500 | RMD | 5551 |
| CQY | 4" Hammer Union | GEN II LLC RH W/O SIGHT GLASS W/ THREAD 4 1/2" - 6 ACME -2G | 0-30 | 1500 | RMD | 5551 |
| CWC | 5" Hammer Union | GEN II LLC RH W/O SIGHT GLASS W/ 5 1/2" - 6 STD. ACME THD. 2G | 0-30 | 1500 | RMD | 5552 |
| CPY | 6" 1500RF | GEN II LLC RH | 0-30 | 3705 | RMD | 5580 |

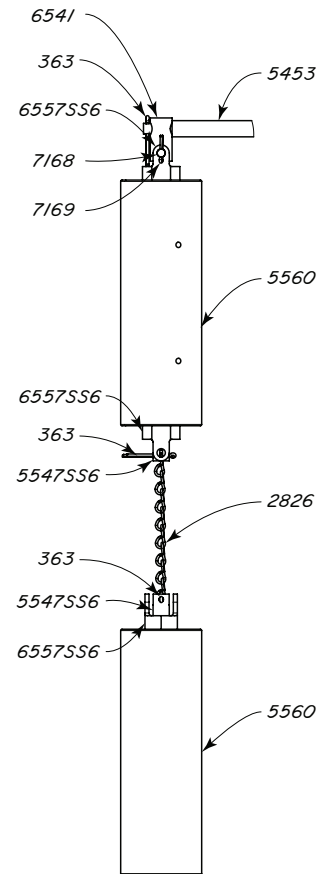
HORIZONTAL (STD.)



VERTICAL



SPLIT FLOAT



* Part 2826 chain comes in 8 foot length

| DISPLACERS | | | | | | |
|---------------|----------------------|--------------|----------|---------|-----------------------------|----------|
| DISPLACER NO. | ACTUAL SIZE | FLOAT WEIGHT | MAX TEMP | MAX PSI | Minimum Differential SP.GR. | MATERIAL |
| 6562 | 1 7/8" x 12" LG | 1lb 15oz | 180°F | 4000 | >0.20 | PVC |
| 6611 | 1 7/8" x 20" LG | 3lb 5oz | 180°F | 4000 | >0.15 | PVC |
| 6606 | 2 3/4" x 14 1/4" LG | 4lb 5oz | 180°F | 4000 | >0.1 | PVC |
| 6971 | 2 1/2" x 12" LG | 3lb 0.5oz | 180°F | 4000 | >0.15 | PVC |
| 5560 | 1 7/8" x 5 11/16" LG | 12oz | 180°F | 4000 | >0.40 | PVC |
| 5461SS6 | 1 3/4" x 12" LG | 1lb 15oz | 500°F | 2000 | >0.20 | 316SS |
| 5461SS6L20 | 1 3/4" x 20" LG | 3lb 0oz | 500°F | 2000 | >0.17 | 316SS |

FLOAT OPERATED LEVEL CONTROLLER



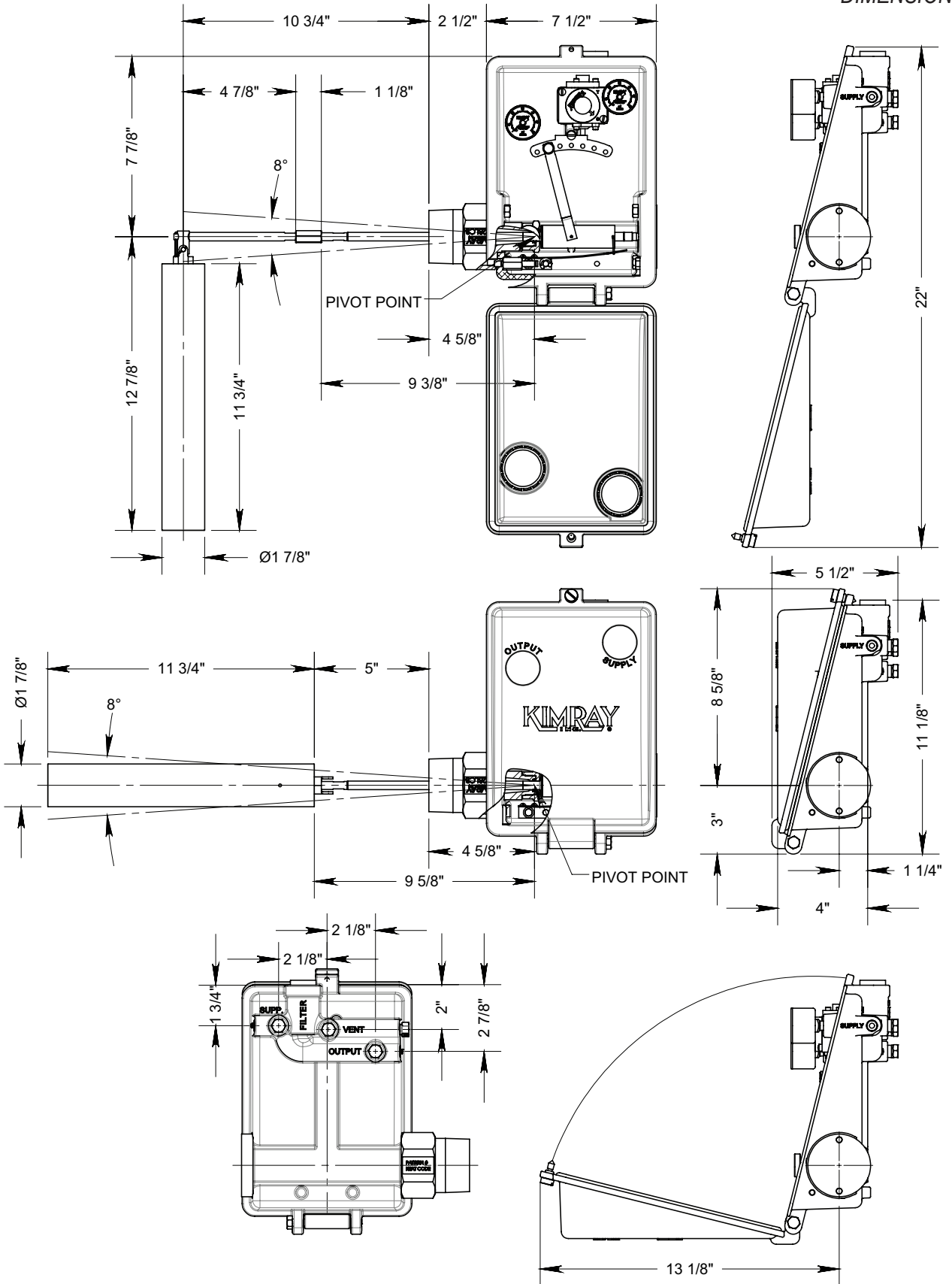
GEN II FLOAT ASSEMBLIES AVAILABLE

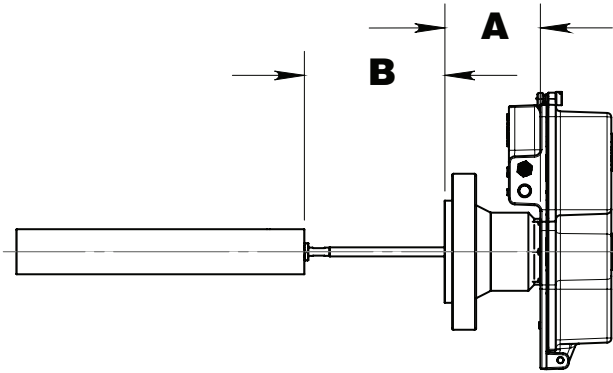
| Config. & Material | Displacer | | | Arm P/N | Arm Extension | | Spring | | "Cotter Pin P/N" | "Hanger Block P/N" |
|--|------------|------------------|---------|---------|---------------|---------|------------|------------|------------------|--------------------|
| | P/N | Nominal Diameter | Length | | Length | P/N | Back Mount | Side Mount | | |
| Vertical PVC Displacer | 6562A | 2" | 12" | 5453 | None | | 6547 | 5467A | 363 | 6541 |
| | 6562A | 2" | 12" | 5453 | 6" | 5543L6 | 6547L | 5557A | 363 | 6541 |
| | 6562A | 2" | 12" | 5453 | 12" | 5543L12 | 6547L | 5557A | 363 | 6541 |
| | 6562A | 2" | 12" | 5453 | 18" | 5543L18 | 6547L | 5557A | 363 | 6541 |
| | 6611A | 2" | 20" | 5453 | None | | 6547L | 5467A | 363 | 6541 |
| | 6611A | 2" | 20" | 5453 | 6" | 5543L6 | 6547L | 5557A | 363 | 6541 |
| | 6611A | 2" | 20" | 5453 | 12" | 5543L12 | 6547L | 5557A | 363 | 6541 |
| | 6611A | 2" | 20" | 5453 | 18" | 5543L18 | 6547L | 5557A | 363 | 6541 |
| | 6606A | 2 3/4" | 14 1/4" | 5453 | None | | 6547L | 5467A | 363 | 6541 |
| | 6606A | 2 3/4" | 14 1/4" | 5453 | 6" | 5543L6 | 6547L | 5557A | 363 | 6541 |
| Vertical Stainless Steel Displacer | 5461SS6 | 2" | 12" | 5453 | None | | 6547 | 5467A | 363 | 6541 |
| | 5461SS6 | 2" | 12" | 5453 | 6" | 5543L6 | 6547 | 5557A | 363 | 6541 |
| | 5461SS6 | 2" | 12" | 5453 | 12" | 5543L12 | 6547L | 5557A | 363 | 6541 |
| | 5461SS6 | 2" | 12" | 5453 | 18" | 5543L18 | 6547L | 5557A | 363 | 6541 |
| | 5461SS6L20 | 2" | 20" | 5453 | None | | 6547L | 5467A | 363 | 6541 |
| | 5461SS6L20 | 2" | 20" | 5453 | 6" | 5543L6 | 6547L | 5557A | 363 | 6541 |
| | 5461SS6L20 | 2" | 20" | 5453 | 12" | 5543L12 | 6547L | 5557A | 363 | 6541 |
| | 5461SS6L20 | 2" | 20" | 5453 | 18" | 5543L18 | 6547L | 5557A | 363 | 6541 |
| Any vertical displacer can be configured into hanger by adding: (1) 2826 Chain, (1) 5546SS6 Hanger Block, (1) 5547SS6 Hanger Screw & (2) 363 Cotter Pins | | | | | | | | | | |
| Horizontal PVC Displacer | 6562A | 2" | 12" | N/A | None | | 6547 | 5467A | N/A | N/A |
| | 6562A | 2" | 12" | N/A | 6" | 5543L6 | 6547L | 5557A | N/A | N/A |
| | 6562A | 2" | 12" | N/A | 12" | 5543L12 | 6547L | 5557A | N/A | N/A |
| | 6562A | 2" | 12" | N/A | 18" | 5543L18 | 6547L | 5557A | N/A | N/A |
| | 6611A | 2" | 20" | N/A | None | | 6547L | 5467A | N/A | N/A |
| | 6611A | 2" | 20" | N/A | 6" | 5543L6 | 6547L | 5557A | N/A | N/A |
| | 6611A | 2" | 20" | N/A | 12" | 5543L12 | 6547L | 5557A | N/A | N/A |
| | 6611A | 2" | 20" | N/A | 18" | 5543L18 | 6547L | 5557A | N/A | N/A |
| | 6606A | 2 3/4" | 14 1/4" | N/A | None | | 6547L | 5467A | N/A | N/A |
| | 6606A | 2 3/4" | 14 1/4" | N/A | 6" | 5543L6 | 6547L | 5557A | N/A | N/A |
| Horizontal Stainless Steel Displacer | 5461S6 | 2" | 12" | N/A | None | | 6547 | 5467A | N/A | N/A |
| | 5461S6 | 2" | 12" | N/A | 6" | 5543L6 | 6547 | 5557A | N/A | N/A |
| | 5461S6 | 2" | 12" | N/A | 12" | 5543L12 | 6547L | 5557A | N/A | N/A |
| | 5461S6 | 2" | 12" | N/A | 18" | 5543L18 | 6547L | 5557A | N/A | N/A |
| | 5461SS6L20 | 2" | 20" | N/A | None | | 6547L | 5467A | N/A | N/A |
| | 5461SS6L20 | 2" | 20" | N/A | 6" | 5543L6 | 6547L | 5557A | N/A | N/A |
| | 5461SS6L20 | 2" | 20" | N/A | 12" | 5543L12 | 6547L | 5557A | N/A | N/A |
| | 5461SS6L20 | 2" | 20" | N/A | 18" | 5543L18 | 6547L | 5557A | N/A | N/A |
| Split Displacer Kit (2"x 6" PVC Displacers linked with Chain.) - P/N: CMP Kit comes with everything needed to convert a vertical displacer to a split displacer: (Not available in stainless steel displacers) (1) 2826 Chain, (2) 363 Cotter Pins, (2) 5547SS6 Hanger Screws, (2) 5560 PVC Displacers (2" Dia x 6" each) & (3) 6557SS6 Bushings | | | | | | | | | | |

| | EXTENSION RODS KITS | | SPRING ASSEMBLIES |
|------------|---------------------|--------|-------------------|
| | EXTENSION NO. | LENGTH | |
| BACK MOUNT | CMUL6 | 6" | 6547L |
| | CMUL12 | 12" | 6547L |
| | CMUL18 | 18" | 6547L |
| SIDE MOUNT | CMOL6 | 6" | 5557 |
| | CMOL12 | 12" | 5557 |
| | CMOL18 | 18" | 5557 |

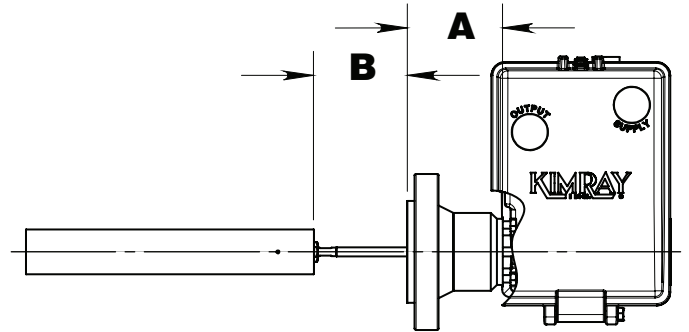
Kimray is an ISO 9001- certified manufacturer.

GEN II SIDE MOUNT DIMENSIONS

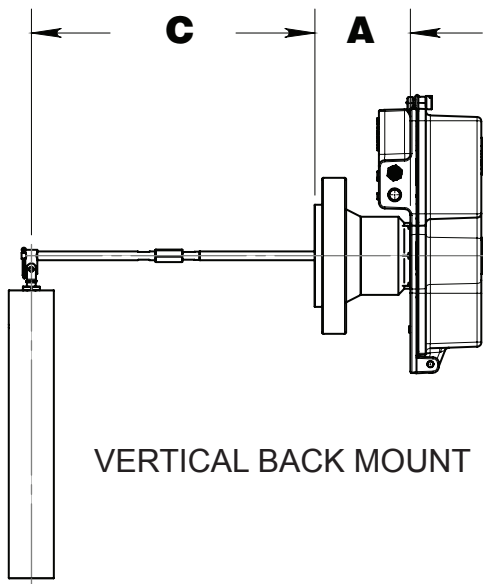




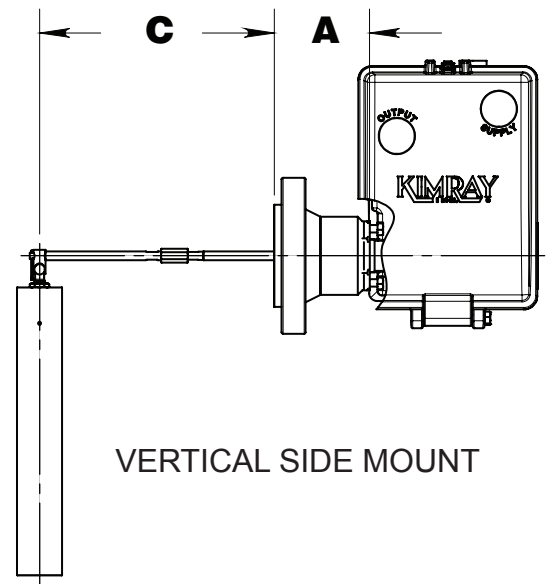
HORIZONTAL BACK MOUNT



HORIZONTAL SIDE MOUNT



VERTICAL BACK MOUNT



VERTICAL SIDE MOUNT

| FLANGES | | 150# | | | 300# | | | 600# | | | 900# | | | 1500# | | | | |
|------------|-------------|-------------|---------|---------|----------|----------|---------|----------|---------|---------|---------|---------|---------|---------|---------|---------|---------|---------|
| TYPE | SIZE | A | B | C | A | B | C | A | B | C | A | B | C | A | B | C | | |
| SIDE MOUNT | Raised Face | 2" | 3 27/64 | 4 15/32 | 10 11/32 | 3 5/8 | 4 17/64 | 10 9/64 | 3 59/64 | 3 31/32 | 9 27/32 | 4 27/64 | 3 15/32 | 9 11/32 | | | | |
| | | 3" | 3 27/64 | 4 15/32 | 10 11/32 | 3 51/64 | 4 3/32 | 9 31/32 | 4 11/64 | 3 23/32 | 9 19/32 | 4 13/16 | 3 5/64 | 8 61/64 | 6 19/64 | 1 19/32 | 7 15/32 | |
| | | 4" | 3 39/64 | 4 9/32 | 10 5/32 | 3 59/64 | 3 31/32 | 9 27/32 | 4 27/64 | 3 15/32 | 9 11/32 | | | | 5 3/4 | 2 9/64 | 8 1/64 | |
| | | 6" | | | | | | | | | | | | | 6 1/8 | 1 49/64 | 7 41/64 | |
| | Ring Joint | 2" | 3 43/64 | 4 7/32 | 10 3/32 | 3 9/16 | 4 21/64 | 10 13/64 | 3 63/64 | 3 57/64 | 9 49/64 | | | | 4 11/64 | 3 23/32 | 9 19/32 | |
| | | 3" | | | | | | | 3 59/64 | 3 31/32 | 9 27/32 | 4 31/64 | 3 13/32 | 9 9/32 | | | | |
| | | 4" | | | | | | | 4 31/64 | 3 13/32 | 9 9/32 | | | | | | | |
| | BACK MOUNT | Raised Face | 2" | 3 27/64 | 4 15/32 | 10 11/32 | 3 5/8 | 4 17/64 | 10 9/64 | 3 59/64 | 3 31/32 | 9 27/32 | 4 27/64 | 3 15/32 | 9 11/32 | | | |
| | | | 3" | 3 27/64 | 4 15/32 | 10 11/32 | 3 51/64 | 4 3/32 | 9 31/32 | 4 11/64 | 3 23/32 | 9 19/32 | 4 13/16 | 3 5/64 | 8 61/64 | 6 19/64 | 1 19/32 | 7 15/32 |
| | | | 4" | 3 39/64 | 4 9/32 | 10 5/32 | 3 59/64 | 3 31/32 | 9 27/32 | 4 27/64 | 3 15/32 | 9 11/32 | | | | 5 3/4 | 2 9/64 | 8 1/64 |
| 6" | | | | | | | | | | | | | | | 6 1/8 | 1 49/64 | 7 41/64 | |
| Ring Joint | | 2" | 3 43/64 | 4 7/32 | 10 3/32 | 3 9/16 | 4 21/64 | 10 13/64 | 3 63/64 | 3 57/64 | 9 49/64 | | | | 4 11/64 | 3 23/32 | 9 19/32 | |
| | | 3" | | | | | | | 3 59/64 | 3 31/32 | 9 27/32 | 4 31/64 | 3 13/32 | 9 9/32 | | | | |
| | | 4" | | | | | | | 4 31/64 | 3 13/32 | 9 9/32 | | | | | | | |

SEALS

Table 1 - GEN II Seal Options

| Product Type | Part | Standard Material | Optional Material |
|----------------------|----------------|-------------------|-------------------|
| Pneumatic & Electric | Mounting Piece | LTV | AFLAS®, HSN, PTFE |
| Pneumatic | Pilot Seals | FKM | N/A |

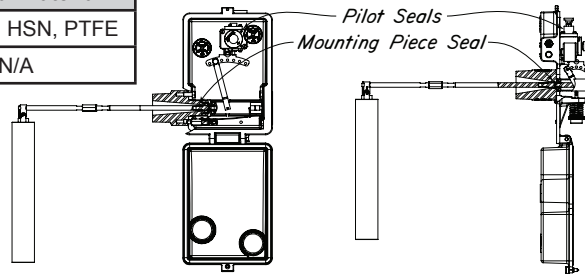


Table 2 - Level Switch Seal Options

| Product Type | Part | Standard Material | Optional Material |
|------------------|-----------|-------------------|----------------------|
| Electric Switch | O-rings | FKM | AFLAS®, HSN, Nitrile |
| Pneumatic Switch | O-rings | FKM | AFLAS®, HSN, Nitrile |
| | Diaphragm | FKM | LTN |

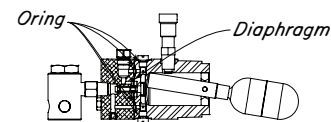


Table 3 - Seal Specifications

| | | NITRILE | HIGHLY SATURATED NITRILE | FKM | AFLAS® | LOW TEMP NITRILE |
|-------------------------|-------------------------|----------------|--------------------------|----------------|----------------|------------------|
| Kimray Suffix | | - | HSN | V | AF | LTN |
| Resistance | Abrasion | G | G-E | G | G | G |
| | Acid | F | G-E | G-E | E | F |
| | Chemical | F | F | E | E | F |
| | Cold | G | G | P | P | E |
| | Flame | P | P | E | E | P |
| | Heat | G | E | E | E | G |
| | Oil | G-E | E | E | E | G-E |
| | Ozone | P | G | G-E | E | P |
| | Set | G | G | G-E | P | G |
| | Tear | F | F | F | P | F |
| | Water/Steam | F | E | P | G | F |
| | Weather | F | G | E | E | F |
| | CO2 | F-G | G | G | G | F-G |
| Properties | H2S | P | F | P | E | P |
| | Methanol | F | E | P | P | P |
| | Dynamic | G | G | G | G | G |
| | Electrical | F | F | F | G-E | F |
| | Impermeability | G | G | G | G | G |
| | Tensile Strength | G | G-E | G | F | G |
| | Temp. Range (°F) | -20° to +225°F | -20° to +250°F | -15° to +400°F | +15° to +450°F | -65° to +225°F |
| Temp. Range (°C) | -29° to +107°C | -29° to +121°C | -26° to +204°C | -9° to +232°C | -53° to +107°C | |
| Form | O,S,D | O,S,D | O,S,D | O,S,D | O,D | |

RATINGS: P-POOR, F-FAIR, G-GOOD, E-EXCELLENT

Table 4 - Materials of Construction

| | Component | Standard Material | Optional Material |
|--|--|---|---------------------|
| Pneumatic & Electric GEN II Level Controllers | Body | ASTM SA-352LCB | ASTM A-351CF8M |
| | Pilot | ASTM B-221 6061-T6 | N/A |
| | Link | 303SS ASTM A-582 | N/A |
| | Tangent Arm | 316 S.S. ASTM A-240 | N/A |
| | Waggle Arm | 316 S.S. ASTM A-479 | N/A |
| | Displacer | PVC | 316 S.S. ASTM A-240 |
| | Spring | 17-7 PH Condition C 302SS ASTM A-313 | N/A |
| Pneumatic Level Switches | Body | Aluminum ASTM B-221 6061-T6 | N/A |
| | Float | 316 S.S. ASTM A-240 | N/A |
| External Float Cages | Electronic & Pneumatic Level Switch Float Cage | ASTM A-352 LCB | ASTM A-351CF8M |
| | Horizontal GEN II Float Cage | ASTM A-106 GR. B | N/A |
| | Vertical External GEN II Float Cage | SA-106B, SA-234 WPB, SA-516-70 | N/A |

