

APPLICATION:

The Electronic Pilot Controller is used in any application where a 4-20mA valve actuator can be controlled by reading a 4-20mA sensor.

FEATURES

- Multiple control schemes
- * PID Control (Pressure Reducing or Back Pressure)
- * High Limit shutdown
- * Low Limit shutdown
- * GAP Control (example: plunger lift application)
- * High Low shutdown
- Multiple applications
- * Pressure control
- * Flow control
- * Temperature control
- * Level control
- Powered from actuator supply
- Reverse Battery Protection
- Bright OLED display technology
- User-friendly menus for installation/operation
- PID Autotuning available for ease of installation

CONSTRUCTION:

Cast aluminum housing for hazardous location areas.

OPERATION:

The Electronic Pilot receives an analog (4-20mA) signal from a sensor which measures a process valve. The signal is conditioned and sent to an electronically controlled valve via 4-20mA output signal. A PID control loop is utilized along with auto-tune and manual tuning capabilities. The pilot can connect directly to an electric actuator and share a common input power source.

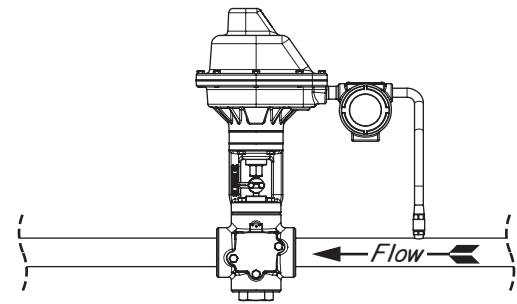
INSTALLATION AND COMMISSION:

- 1) Mount appropriate hardware
- 2) Specify sensor using the menu
- 3) Select control scheme
- 4) Perform auto-tuning or manual-tuning

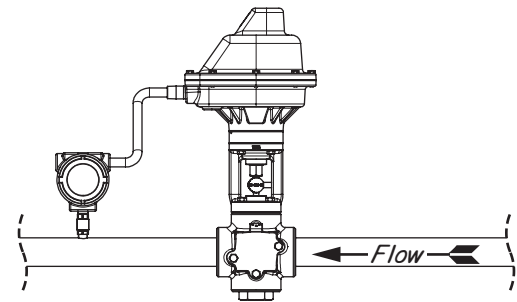
CERTIFICATIONS:

CSA HAZARDOUS LOCATION
Class I, Div 1, Groups B, C, D
Class II, Groups E, F, G
Class III, T6
Type 4X enclosure, IP66 rated

IECEX/ATEX (see label)
Ex db IIC T6 Gb
Ex tb IIIC T80°C Db
TA = -40°C to 60°C
IP66



BACK PRESSURE INSTALLATION



PRESSURE REDUCING INSTALLATION

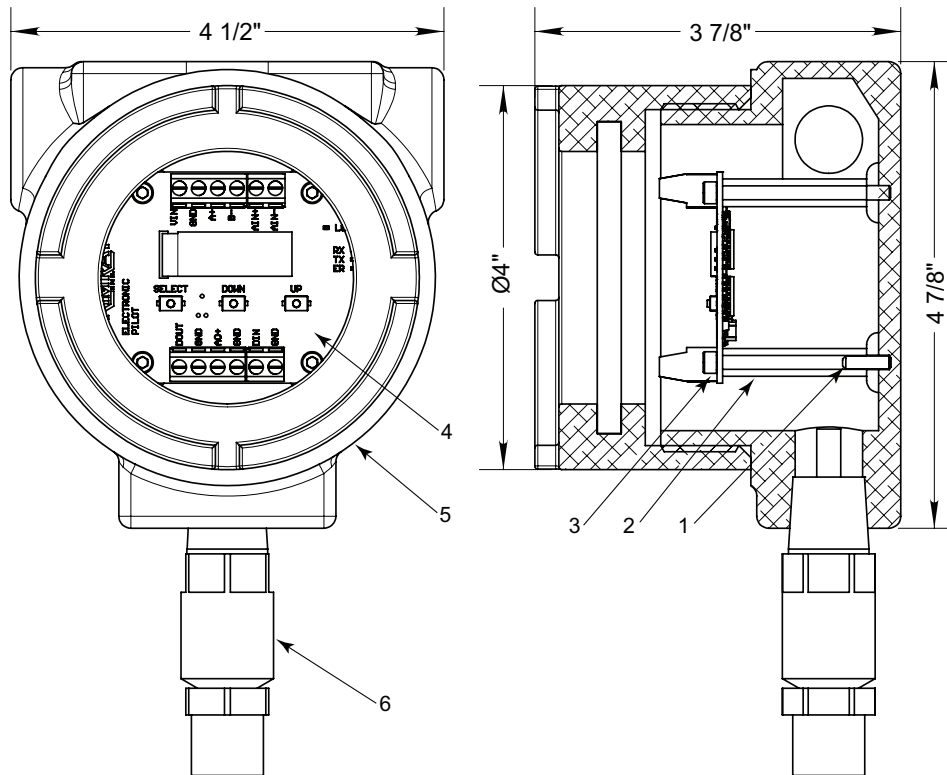
ELECTRICAL RATINGS			
	Min	Max	Units
Input Voltage (VIN)	10	30	VDC
Input Current	0.05	0.10	ADC
Ambient Temperature	-40	60	°C
	-40	140	°F
Analog input From Sensor	4-20 mA (powered by VIN)		
Discrete input	Dry Contacts only		
Analog Output to Actuator	4-20 mA (powered by VIN)		
Communications	RS-485 (MODBUS RTU)		
Discrete Output	0 VDC or VIN, up to 1A		

Order Code	Description
YEP	ELECTRIC PILOT CONTROLLER
International Actuators Codes	
YEPI	ELECTRIC PILOT CONTROLLER

PILOTS & RELAYS



ELECTRIC PILOT CONTROLLER DRAWING & PARTS LIST



ITEM	QTY.	DESCRIPTION	PART NO
1	4	SET SCREW 6-32	7472A
2	4	PCB STANDOFF 6-32 x 3/8" HEX	7472B
3	4	6-32 x 1/4 SOCKET HEAD SCREW	7495
4	1	MAIN PCB	KA7509
5	1	ENCLOSURE	7483
6	1	PRESSURE TRANSDUCER	SEE BELOW

ACCESSORIES AVAILABLE			
PART NO	DESCRIPTION	CONNECTION	MAX SET PRESSURE
KSW4363129	0-1000PSI EXP PRESSURE TRANSMITTER	1/2 " Male NPT	1000 psig
KSW4363146	0-2000PSI EXP PRESSURE TRANSMITTER		2000 psig
KSW4202506	0-3000PSI EXP PRESSURE TRANSMITTER		3000 psig
KSW4363090	0-100PSI EXP PRESSURE TRANSMITTER		100 psig
KSW4363111	0-500PSI EXP PRESSURE TRANSMITTER		500 psig
KSW4363155	0-5000PSI EXP PRESSURE TRANSMITTER		5000 psig
KSW4363163	0-8000PSI EXP PRESSURE TRANSMITTER		8000 psig
7513	CONDUIT PLUG		

All Pictures shown are for illustration purpose only. Actual product may vary due to product enhancement.