

**APPLICATION:**

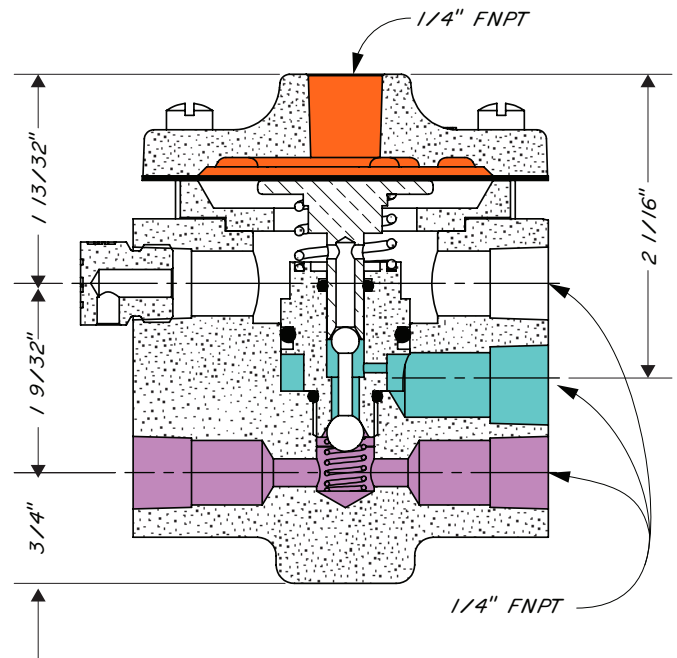
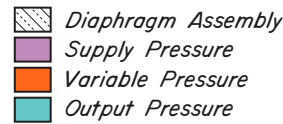
Any system where a 0 to 300 psig signal must be switched using a 20 to 30 psig signal.

**FEATURES:**

Intermittent vent pilot 3 Way Valving  
Direct acting

**CLASSIFICATIONS:**

Non-Bleed / Intermittent Vent



Standard Configuration Code †	Order Code	Variable Press psig ††	Supply Press psig	Output Press psig	Max. W.P. psig †††
PVH0D0S	YAI	20 - 30	0 - 300	0 or Supply	300

**NOTES:**

For standard & optional seals, metals, Cf Cv values, material specifications & dimensions see technical data on pages 09:I - 09:IV

† For Corrosive service remove last "S" & replace with "C"

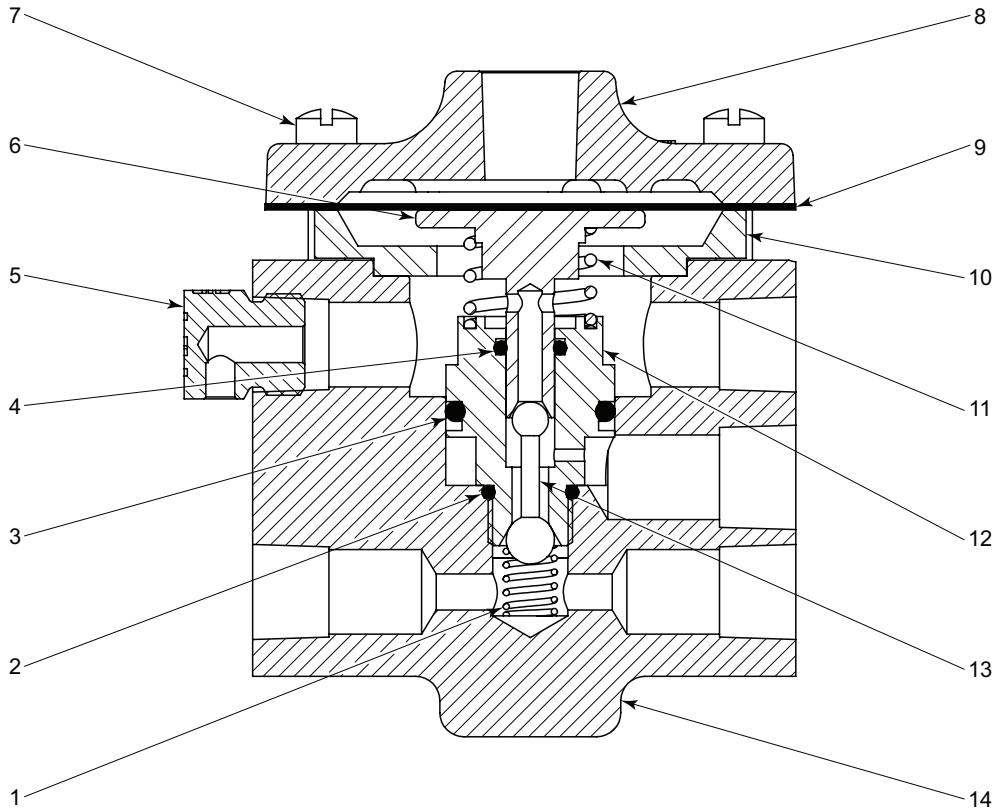
† For code builder see page 09:00.4

†† Variable pressure snapping range depending on supply Pressure approximately 2 - 7 psig at 30 psig

††† Max W.P. values based on -20°F to 100°F.

# PILOTS & RELAYS

300 VOLUME BOOSTER  
MODEL VH DRAWING & PARTS LIST



ITEM	QTY.	DESCRIPTION	PART NO		ITEM	QTY.	DESCRIPTION	PART NO	
			STANDARD	CORROSIVE				STANDARD	CORROSIVE
1	1	Spring *	585		8	1	Cover	577	2414SS6
2	1	O-Ring *	265HSN		9	1	Diaphragm *	582HSN	
3	1	O-Ring *	924HSN		10	1	Housing	5125	
4	1	O-Ring *	638HSN		11	1	Spring	1358	
5	1	Breather Plug	147	147SS6	12	1	Lower Seat	2338	2338S6
6	1	Upper Seat	2337	2337S6	13	1	Pilot Plug *	112	
7	6	Screw	573		14	1	Body	2335	2408SS6
* These parts are recommended spare parts and are stocked as repair kits.							Repair Kit	RXY	

**CODE BUILDER**  
**P SERIES (RELAYS)**

Series:

P = Pilots & Relays

Model:

VL = 30 Volume Booster  
VH = 300 Volume Booster  
BR = Bistable Relay  
PT = Pressurestat

Action

0 = N/A (VH, BR, PT only)  
S = Snap (VL only)  
T = Throttle (VL only)  
M = Manual Reset (VL only)

Shell Material:

**D = Ductile Iron**  
C = 316SS (C service type only)

Control Range:

0 = N/A

Service Type:

**S = Standard**  
C = Corrosive (C shell material only)

P	VL	S	D	0	S	
---	----	---	---	---	---	--

Options: Additional cost and lead times will apply  
If multiple options required input in sequential order  
Leave blank if no options required

1 = NACE Certification (Corrosive Option Only)  
V = FKM Elastomer

Not all selections available on all products listed.  
See product pages 01:40.1 - 01:70.2 for available options