

APPLICATION:

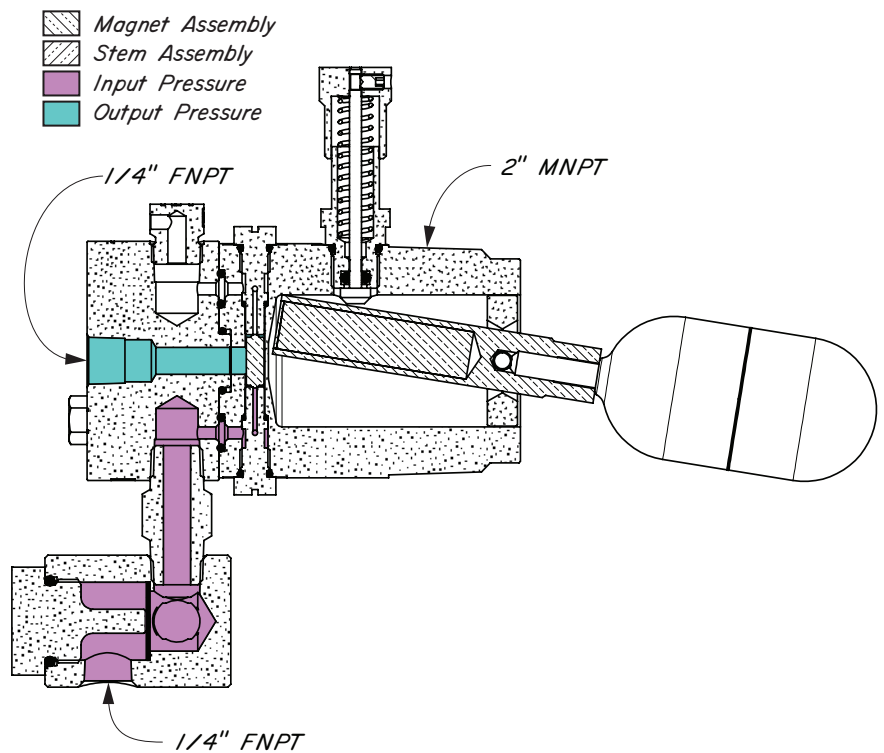
Liquid level switch for oil and gas separators, water knock-outs, gas scrubbers and accumulators.

FEATURES:

- Manual override for testing
- Float operates in 0.5 specific gravity
- Designed for harsh gas compressor scrubber applications
- Snap Acting
- Flow Rate 17 SCFH @ 30psig
- 36 SCFH @ 75psig

CERTIFICATIONS:

- Canadian Registration Number (CRN):
0H13594.2134567890NTY
 - NACE MR0175 compliant wetted parts
 - Certification documents available upon request, specify when ordering
- Kimray is an ISO 9001- certified manufacturer.



Standard Configuration Code †	Order Code	Line Size	Connection Type	Supply Press. psig	Max. W.P. psig ††
FPK2S4WSAS	CUB	2"	NPT	0-75	2000

NOTES:

For standard & optional seals, metals, material specifications & dimensions see technical data on pages 08:I - 08:VII

† For Corrosive service remove last "S" & replace with "C"

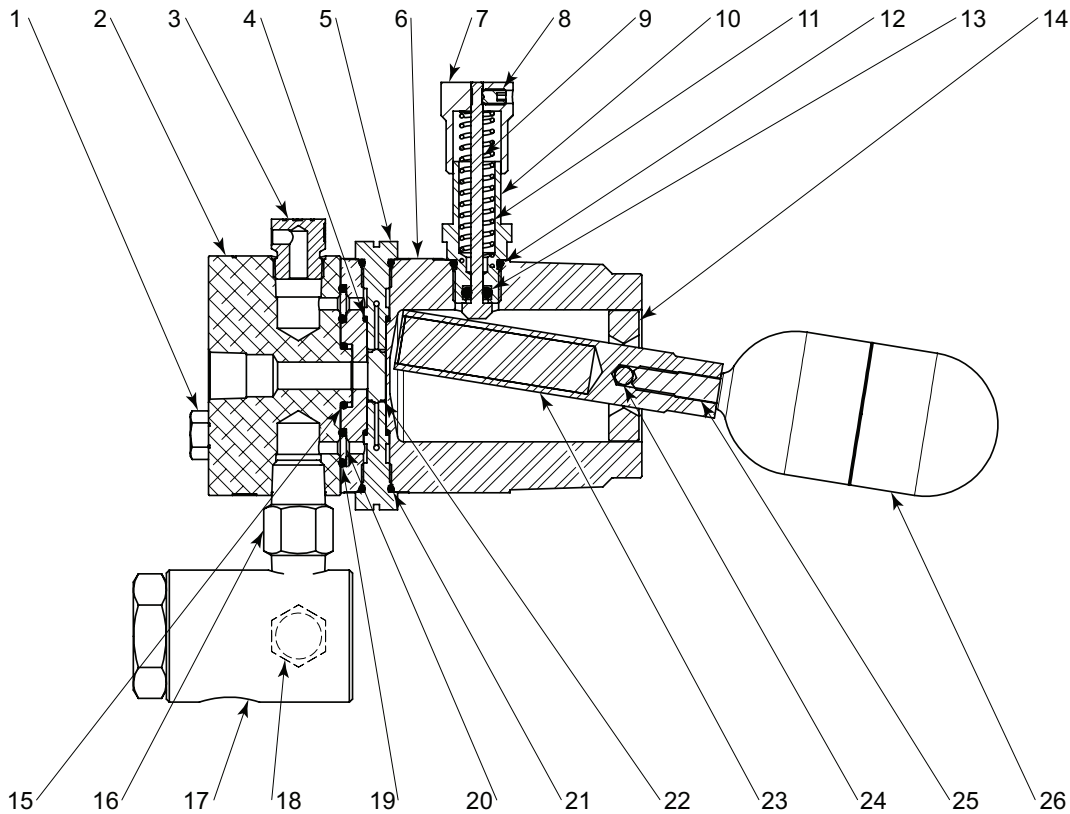
† For code builder see page 08:00.3

†† Max W.P. values based on -20°F to 100°F.

FLOAT OPERATED CONTROLLERS



PNEUMATIC LEVEL SWITCH NO RELAY MODEL PK PARTS DRAWING & LIST



ITEM	QTY.	DESCRIPTION	PART NO.		ITEM	QTY.	DESCRIPTION	PART NO.	
			STANDARD	CORROSIVE				STANDARD	CORROSIVE
1	2	Screw	7024	7024	15	1	O-Ring *	3026V	3026V
2	1	Pilot Body	7248	7248	16	1	Nipple	648	648SS6
3	1	Breather Plug	147	147SS6	17	1	Filter 1/4 F30	YAS	YASSS6
4	2	O-Ring *	7015V	7015V	18	1	Plug	699	699SS6
5	2	Seat	6990	6990	19	2	O-Ring *	7524V	7524V
6	1	Housing	7549	7549	20	2	Disc Filter *	7012	7012
7	1	Push Cap	5417	5417	21	2	O-Ring *	7019V	7019V
8	1	Set Screw	5426	5426	22	1	Shuttle	6996	6996
9	1	Stem	5419	5419	23	1	Float Lever	7017S6	7017S6
10	1	Override Fitting	7548	7548	24	1	Pivot Pin	7020	7020
11	1	Spring	5429	5429	25	1	Set Screw	6851	6851
12	1	O-Ring *	7584V	7584V	26	1	SS6 Float	3216	3216
13	1	O-Ring *	5410V	5410V			Repair Kits	RZX	RZX
14	1	Annulus Plug	7145	7145					

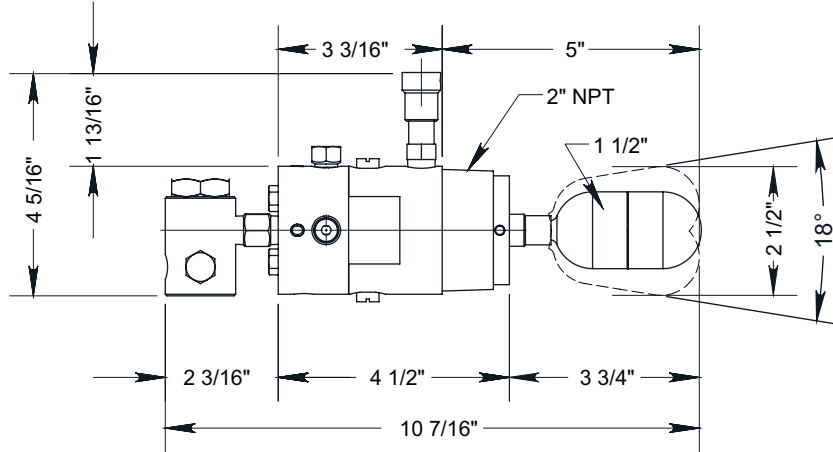
* These parts are recommended spare parts and are stocked as repair kits.

FLOAT OPERATED CONTROLLERS

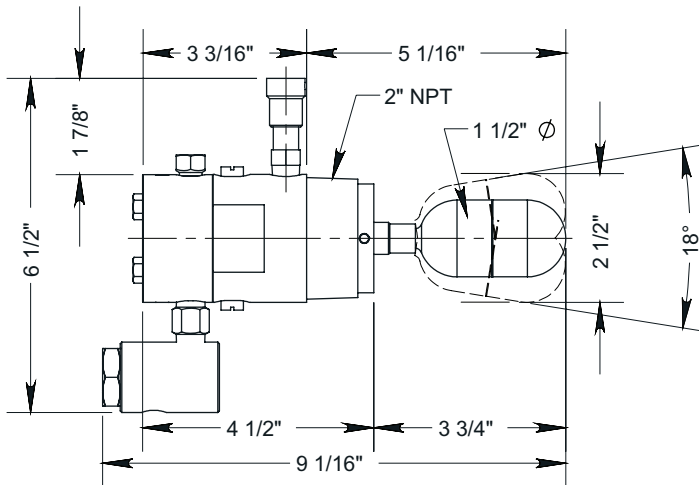


DIMENSIONS PNEUMATIC LEVEL SWITCH

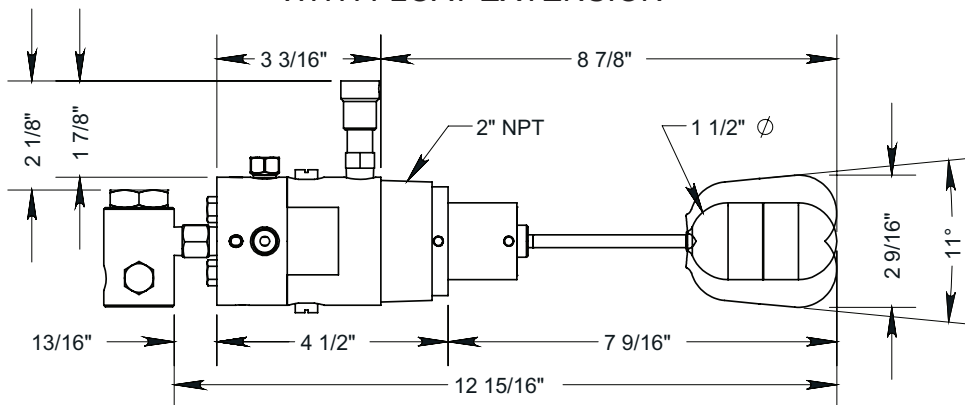
WITH RELAY



WITH OUT RELAY



WITH FLOAT EXTENSION



All Pictures shown are for illustration purpose only. Actual product may vary due to product enhancement.

Table 1 - GEN 3 Seal Options			
Product Type	Part	Standard Material	Optional Material
Pneumatic	Mounting Piece	FKM	AFLAS®, HSN,
	Pilot Seals	FKM	N/A

Table 2 - Level Switch Seal Options			
Product Type	Part	Standard Material	Optional Material
Electric Switch	O-rings	FKM	AFLAS®, HSN, Nitrile
Pneumatic Switch	O-rings	FKM	N/A
	Diaphragm	FKM	LTN

Table 3 - Seal Specifications						
		NITRILE	LOW TEMP NITRILE	HIGHLY SATURATED NITRILE	FKM	AFLAS®
	Kimray Suffix	-	LTN	HSN	V	AF
Resistance	Abrasion	G	G	G-E	G	G
	Acid	F	F	G-E	G-E	E
	Chemical	F	F	F	E	E
	Cold	G	E	G	P	P
	Flame	P	P	P	E	E
	Heat	G	G	E	E	E
	Oil	G-E	G-E	E	E	E
	Ozone	P	P	G	G-E	E
	Set	G	G	G	G-E	P
	Tear	F	F	F	F	P
	Water/Steam	F	F	E	P	G
	Weather	F	F	G	E	E
	CO2	F-G	F-G	G	G	G
	H2S	P	P	F	P	E
	Methanol	F	P	E	P	P
Properties	Dynamic	G	G	G	G	G
	Electrical	F	F	F	F	G-E
	Impermeability	G	G	G	G	G
	Tensile Strength	G	G	G-E	G	F
Temp. Range		-20° to +250°F	-65° to +225°F	-20° to +300°F	-15° to +400°F	+15° to +450°F
		-29° to +121°C	-53° to +107°C	-29° to +149°C	-26° to +204°C	-9° to +232°C
RATINGS: P-POOR, F-FAIR, G-GOOD, E-EXCELLENT						

Table 4 - Material Options			
	Component	Standard Material	Optional Material
Pneumatic GEN3 Level Controllers	Body	Steel (ASTM SA352LCB)	316SS (ASTM A351 CF8M)
	Pilot	Aluminum (ASTM B221 6061-T6)	N/A
	Shaft & Bearing Hubs	Steel (ASTM)	316SS (ASTM A240)
	Bearings	Polyimide filled PTFE	N/A
	Levers	Steel (FLN2C-4005)	N/A
	Displacer	PVC	316SS (ASTM A 240)
	Spring	17-7SS (ASTM A313)	N/A
Pneumatic Level Switches	Body	Aluminum (ASTM B221 6061-T6)	N/A
	Float	316SS (ASTM A 240)	HDPE (ASTM D4976)
External Float Cages	Electronic & Pneumatic Level Switch Float Cage	Steel (ASTM SA352LCB)	316SS (ASTM A351 CF8M)
	Horizontal GEN II Float Cage	ASTM A-106 GR. B	N/A
	Vertical External GEN II Float Cage	SA-106B, SA-234 WPB, SA-516-70	N/A

Series:

F = Float Operated Controllers

Model:

PS = Pneumatic Level Switch
PK = Pneumatic Level Switch w/o Relay
PX = Pneumatic Extended Level Switch
ES = Electric Level Switch
EL = Electric Level Switch Low power
EV = Electric Level Switch Vertical Float

Connection Size:

1 = 1 1/2 NPS (ES, EL & EV only)
2 = 2 NPS

End Connection:

S4 = MNPT

Override:

W = With manual Override
N = Without Manual Override

Float Type:

P = Poly - 5000 psi (ES, EL & EV only)
S = 316SS - 2000 psi

Float Extensions:

A = None

Service Type:

S = Standard

F	PS	2	S4	W	P	A	S	
---	----	---	----	---	---	---	---	--

Options: Additional cost and lead times will apply
If multiple options required input in sequential order
Leave blank if no options required

1 = NACE Certification
2 = Hydrostatic Test Certification
3 = MTR (Shell Components)
A = AFLAS Elastomers
H = HSN Elastomer
X = Export (Hydrostatic test, MTR & 3.1)

Not all selections available on all products listed.
See product pages 08:50.1 - 08:60.3 for available options