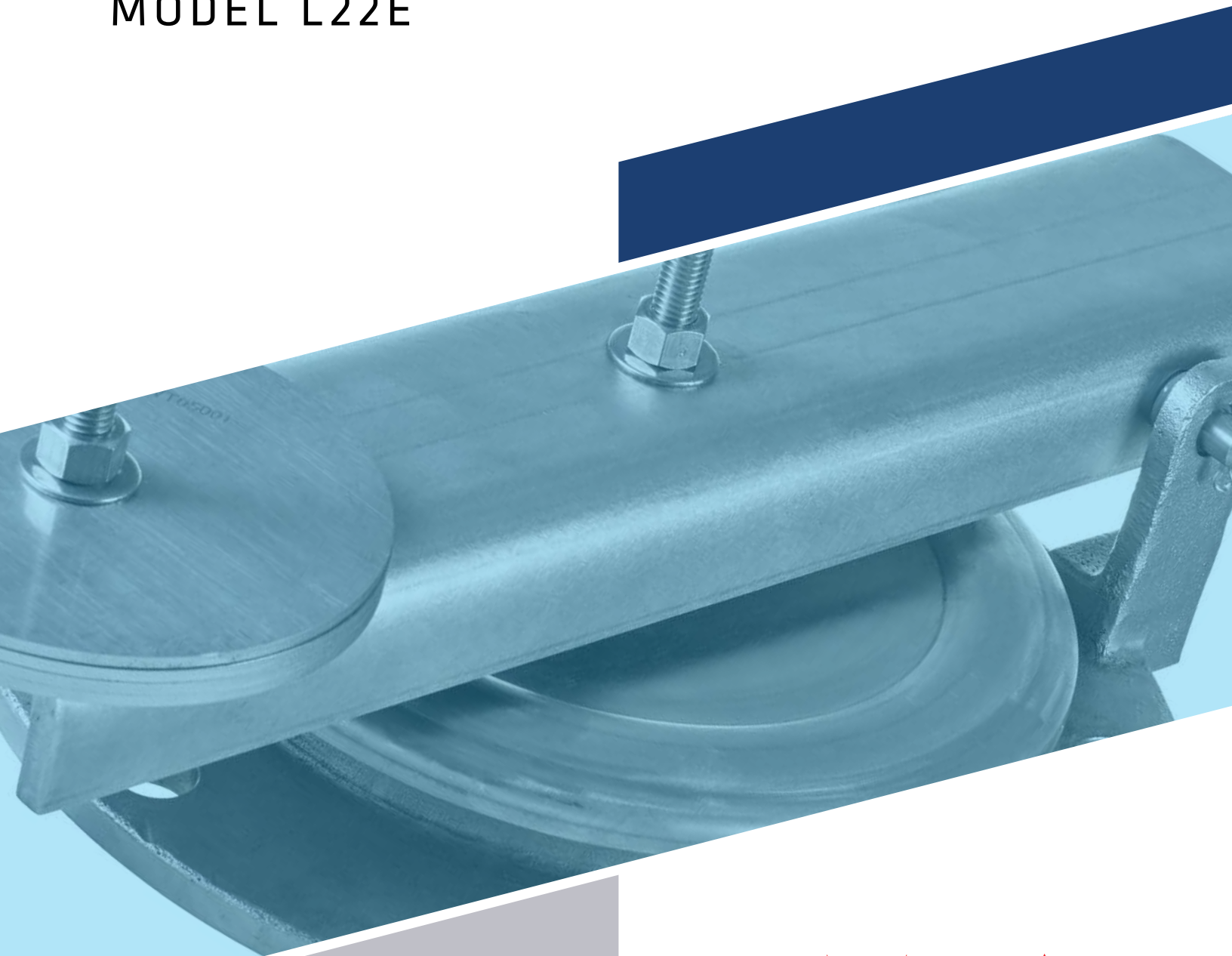


LAMOT[®]

VALVE & ARRESTOR

EMERGENCY RELIEF VENT

MODEL L22E



KIMRAY
INC. [®]

MODEL L22E

The LaMot Valve & Arrestor Model L22E Emergency Relief Vent is designed to provide superior sealing and industry leading high flow rates. When properly sized, the high flow capacity will help protect the tank from damage in an emergency event.

Technical Details

- Sizes: 8" and 12"
- Bolting: API and ASME 150#
- Available Pressure Settings: 4 to 32 osig (in 0.5 osig Increments)
- +/- 3% Set Pressure Accuracy
- Leak Rate of no more than 1 SCFH of air at 90% of set pressure
- Base & Arm: Carbon Steel or Stainless Steel
- Diaphragm Materials: Buna-N (black), FKM (blue) or FEP (clear)
- Pallet: Stainless Steel
 - Aluminum for 8" size pressure setting between 4.0 through 5.5 osig only
- Reinforcement Plate*: Stainless Steel*
 - Reinforcement plate is required for pressure ranges: 8" 20.5 to 32 osig and 12" 8.5 to 32 osig
 - Require for 16", 20" and 24" sizes
- Weld Overlay Seat: Stainless Steel

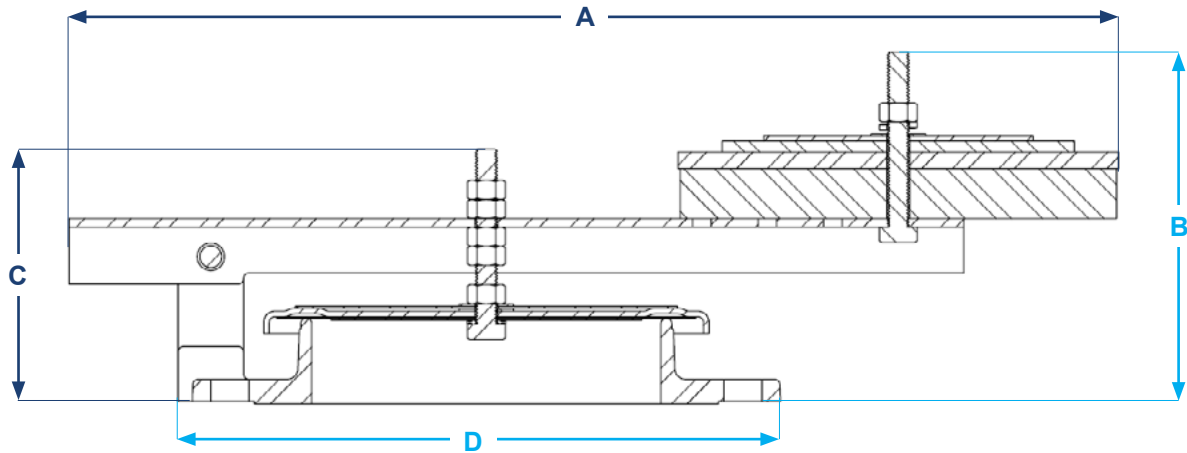
Features

- Modern manufacturing processes result in superior seals which reduce leakage and fugitive emissions
- Engineered for industry leading flow to better protect against excessive pressure build up
- Direct replacement for any standard API 12 or ASME Emergency Relief Vent
- Easy maintenance reduces downtime and operational costs

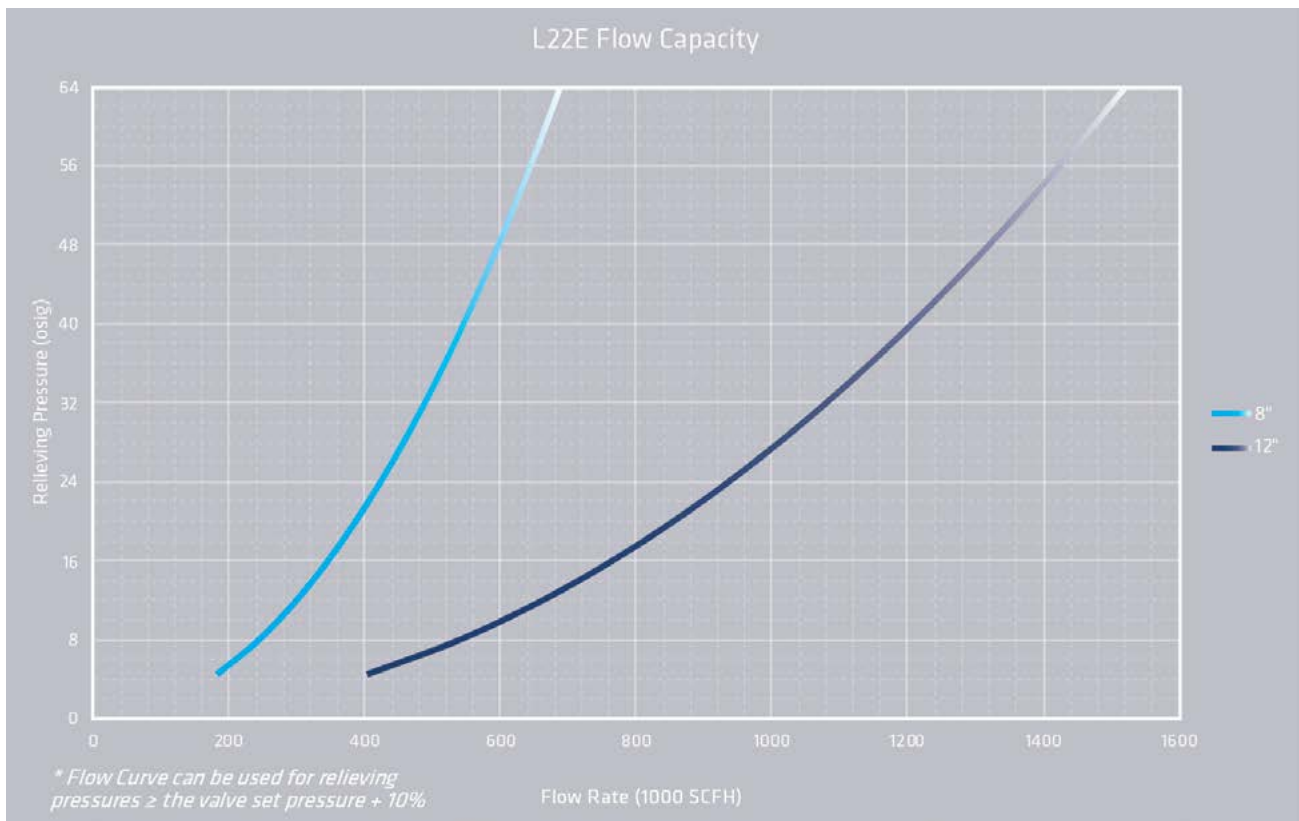


SPECIFICATIONS

Size In (mm)	A In (mm)	B In (mm)	C In (mm)	D In (mm)
8 (200)	24 (610)	8.04 (204)	5.82 (148)	12.5 (342.9)
12 (300)	28.5 (724)	13.32 (338)	6.81 (173)	19 (482.6)



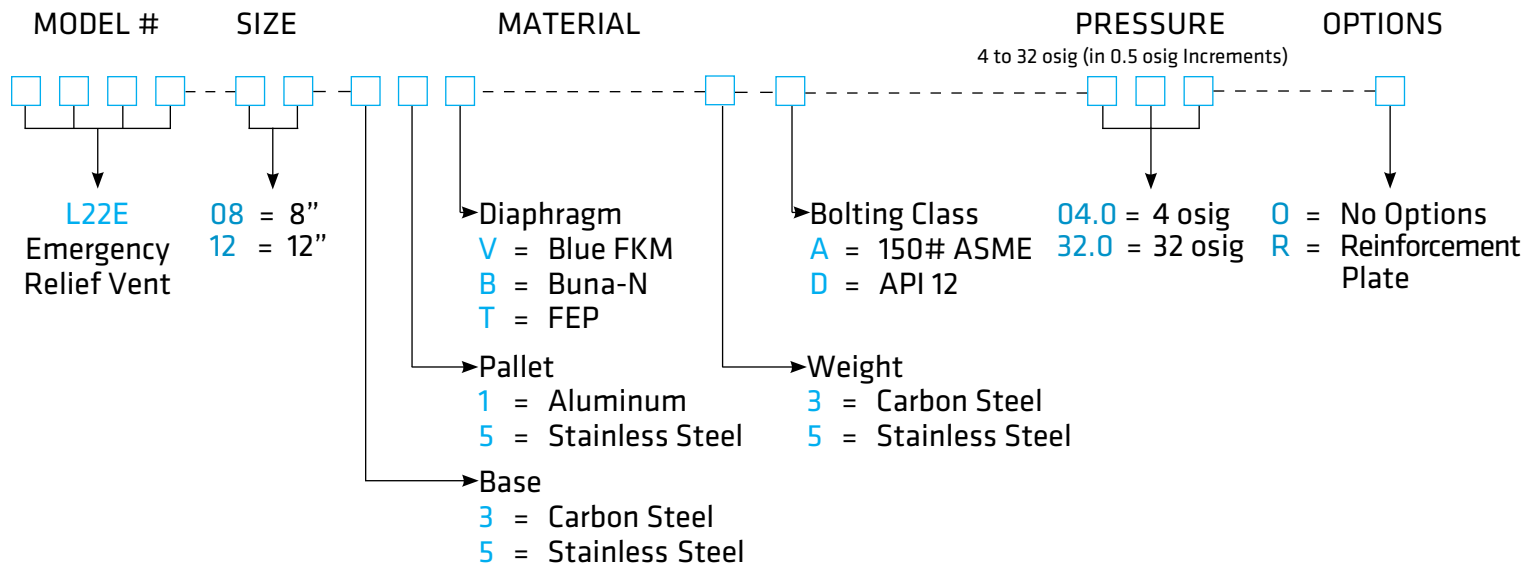
FLOW CAPACITY



The test equipment, procedures, and reporting methods meet the requirements of standards API 2000/ISO 28300 and ISO 16852. The equipment, procedures, and methods have been reviewed and certified by TÜV SÜD. Flow data are for tank mounting or end of line and includes entrance loss, exit loss and internal losses. Flow values based on air at 60°F venting to atmospheric pressure of 14.6959 psia.

HOW TO ORDER

For easy ordering, select proper model numbers



Notes

- For special options, consult factory

Example

L 2 2 E - 0 8 - 3 5 V - 5 - A - 0 4 0 - 0

Indicates a 8" Model L22E with Carbon Steel base, Stainless Steel pallet and FKM soft goods, Stainless Steel weight, 150# ASME bolting class, 0.4 osig Pressure Setting and no other options.



LAMOTVALVEARRESTOR.COM