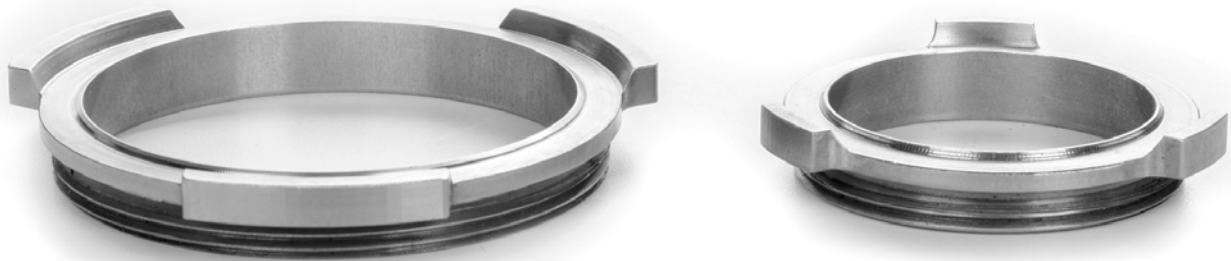


IMPROVED DESIGN OF REMOVABLE SEATS ON LOW PRESSURE HIGH VOLUME VALVE

This product notice is to inform you that we have increase the height of the lobes on all LPHV removable seats. This will provide a more secure grip when installing and removing the seat.

With the new design we have increased the height of the lobes, which will provide a more secure grip when installing and removing the seat.



This change will have no impact on the fit, form, or function, so part numbers will remain the same.

- 2" full port: 7630, 7630S6, 7630D2
- 2" reduced port: 7554, 7554S6
- 3" full port: 7653S3, 7653S6, 7653D2
- 3" reduced port: 7654S3, 7654S6, 7654D2

These improved seats are in production and should start appearing in newly assembled valves soon.