

#### APPLICATIONS:

Pilot may be installed remotely from the motor valve. The Pilot is used in the control of low pressure where the desired controlled pressure ranges from a few ounces to 20 psig on:

- Vessels
- Vent lines
- Distribution systems
- Inlet and recirculation on compressors, pressure

It may be used to produce a pneumatic output signal when the monitored pressure falls below the set pressure. The pneumatic signal source is isolated from the monitored pressure.

#### FEATURES:

- Single adjustment
- Filtered gas supply
- High accuracy
- Intermittent vent pilot construction
- Remote installation





#### SUPPLY PRESSURE:

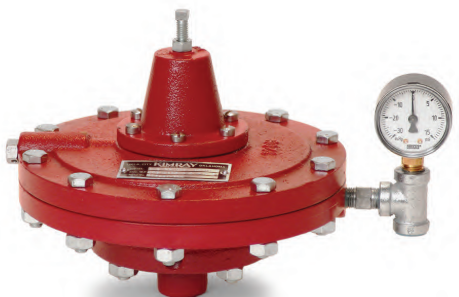
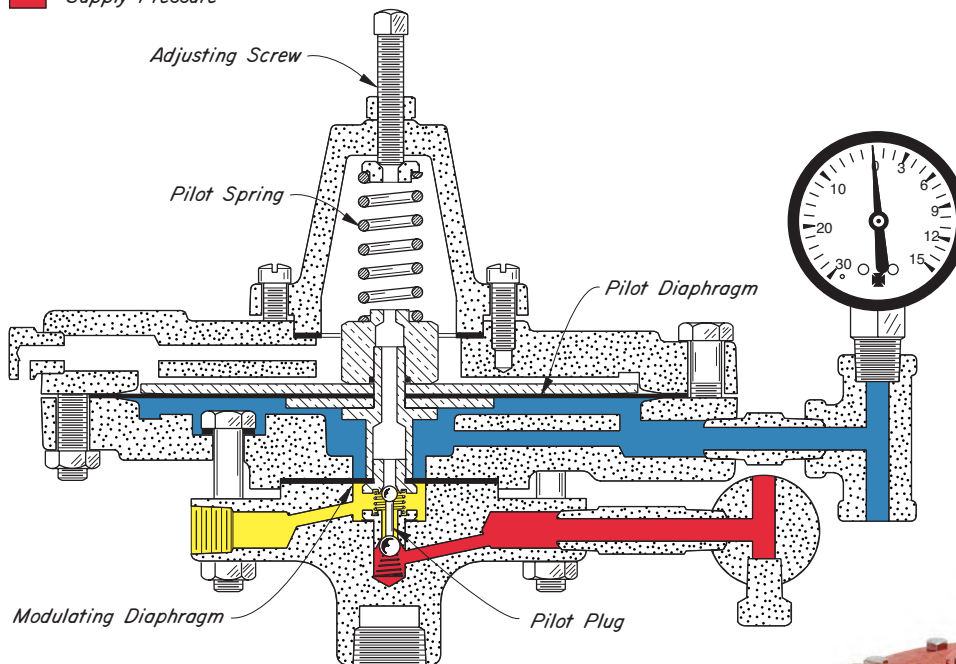
Equal to or not less than 60% of maximum upstream pressure when used to operate low pressure motor valves (shown in Catalog Section E2)

20 to 30 psig when used to operate high pressure motor valves (shown in Catalog Section E1).

#### PRESSURE RANGE:

Ounces to 20 psig

-  Pilot Assembly
-  Output Pressure
-  Controlled Pressure
-  Supply Pressure



#### OPERATION:

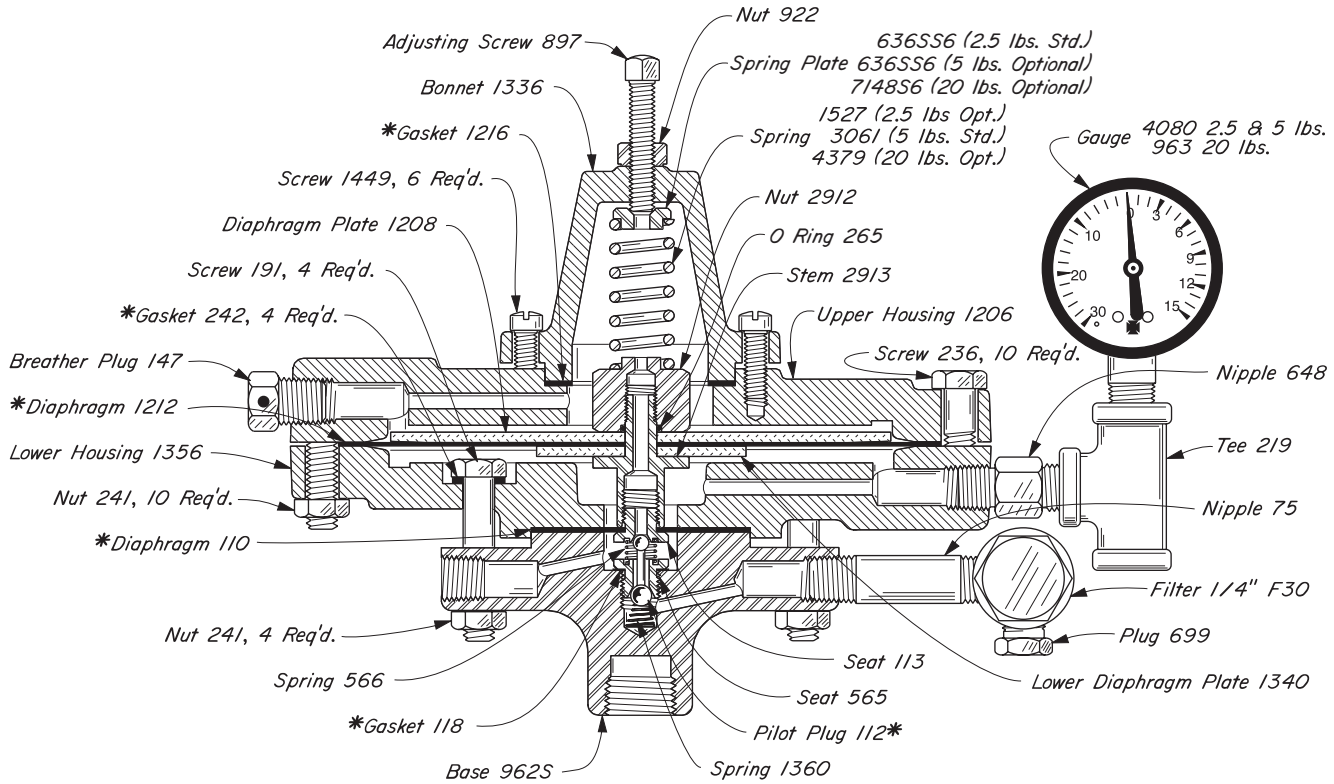
The Pilot Assembly, which moves as a unit without friction within the housing, is supported by the PILOT DIAPHRAGM and the MODULATING DIAPHRAGM. The PILOT SPRING loads the upper side of the Pilot Assembly and is opposed on the underside by Controlled Pressure (Blue) acting on the net area of the PILOT and MODULATING DIAPHRAGMS (area of PILOT DIAPHRAGM minus area of MODULATING DIAPHRAGM).

With a slight decrease in Controlled Pressure (Blue) the Pilot Assembly is forced downward by the PILOT SPRING. The upper seat for the PILOT PLUG (Yellow to Atmosphere) is closed and the lower seat for the PILOT PLUG (Red to Yellow) is opened. This results in an increased Output Pressure (Yellow) under the MODULATING DIAPHRAGM which balances the lost upward force due to the slight decrease of Controlled Pressure (Blue). The Pilot Assembly returns to a position at which both the upper and lower seats are closed. A light increase in Controlled Pressure (Blue) opens the upper seat and closes the lower seat to reduce the Output Pressure (Yellow).

# PILOTS AND ACCESSORIES



## OUNCES TO ATMOSPHERE PILOT DUCTILE IRON



### PILOTS AVAILABLE:

| CAT. NO. | PILOT     | MAX W.P. | OPER. PRES. | KIT |
|----------|-----------|----------|-------------|-----|
| AHK-2.5  | 0.2 PG OA | 175      | 2.5         | RWO |
| AHK-5    | 0.5 PG OA | 175      | 5           | RWO |
| AHK-20   | 2 PG OA   | 175      | 20          | RWO |

### NOTES:

\*These are recommended spare parts and are stocked as repair kits.