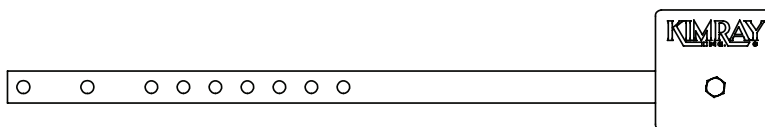


ITEM	QTY.	DESCRIPTION	PART NO.	
			STANDARD	316 SS6
1	1	GASKET		437
2	6	BOLT		247
3	1	FLOAT ARM HUB	7599	7599S6
4	1	TRUNNION PLUG	369	369SS6
5	1	SHAFT	7606	7606S6
6	2	GASKET		366
7	1	BONNET		436
8	1	THRUST WASHER		362
9	1	PACKING		356
10	1	STUFFING BOX	359	359SS6
11	1	PACKING RING		353
12	1	PACKING FOLLOWER	350	350SS6
13	1	STUFFING BOX NUT	347	347SS6
14	2	BOLT		247
15	1	LEVER HUB		7602
16	1	LEVER		340
17	2	BALL JOINT		753
18	2	NUT		241
19	1	LINKAGE ROD		754
20	1	SET SCREW		7608



OPTIONAL LEVER BARS & WEIGHTS			
ITEM	QTY.	DESCRIPTION	PART NO.
16	1	24" LONG LEVER BAR	7591L24
		36" LONG LEVER BAR	7591L36
16	1	7 lb. WEIGHT (not shown)	424
		9 lb. WEIGHT (not shown)	425
		11 lb. WEIGHT (not shown)	426
Ordered separately from item code			

#### TRUNNION ASSEMBLIES AVAILABLE:

PART NO.	MODEL NO.	MAX W.P.
CCF	25 TOB-D	500
CCFS6	25 TOB-D-S6	500

#### NOTES:

For standard & optional Seals, Metals, Cv values, Material specifications & Dimensions see Technical Data on pages C2:I - C2:V

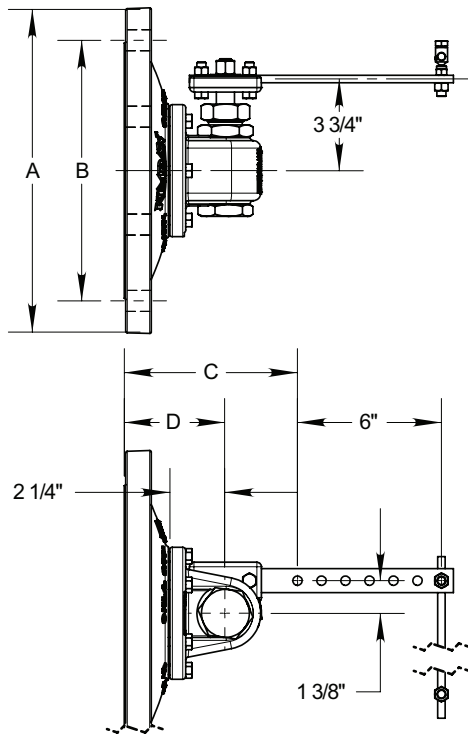
Adapter Plate is available for welding applications, order Part No. 705, 6" OD x 1" Thick.

# MECHANICAL LEVEL CONTROLS



## DIMENSIONS TRUNNION ASSEMBLY

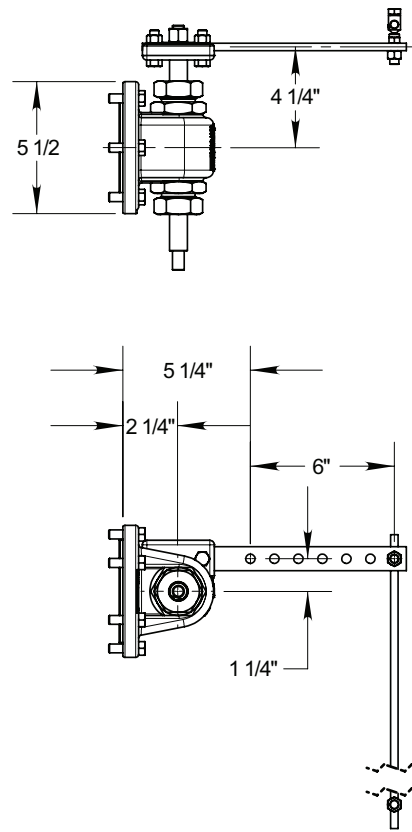
612, 812 & 1012 TO-D



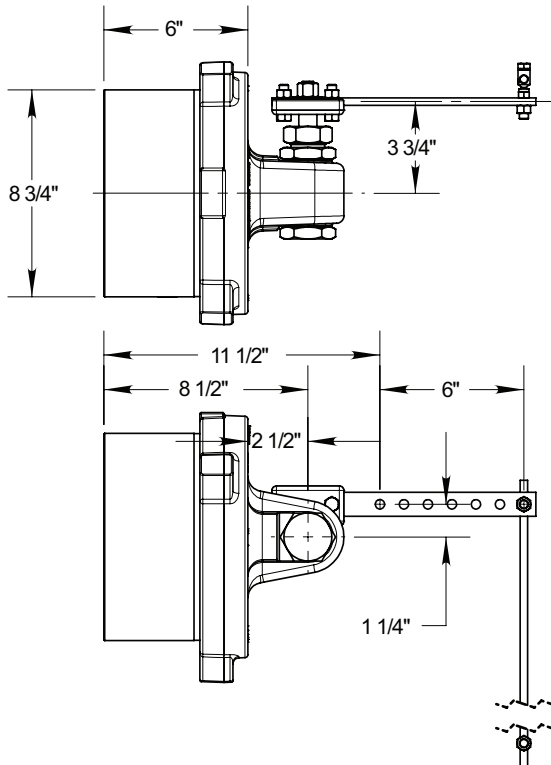
SIZE	NUMBER	A	B	C	D	No. SIZE OF BOLTS
6	612 TO	11 in	9 1/2 in	7 1/4 in	4 1/4 in	8 3/4 x 3 1/2
8	812 TO	13 1/2 in	11 3/4 in	7 1/4 in	4 1/4 in	8 3/4 x 3 1/2
10	6 1/8 in	16 in	14 1/4 in	7 1/2 in	4 1/2 in	12 7/8 x 3 1/2

All dimensions are in inches.

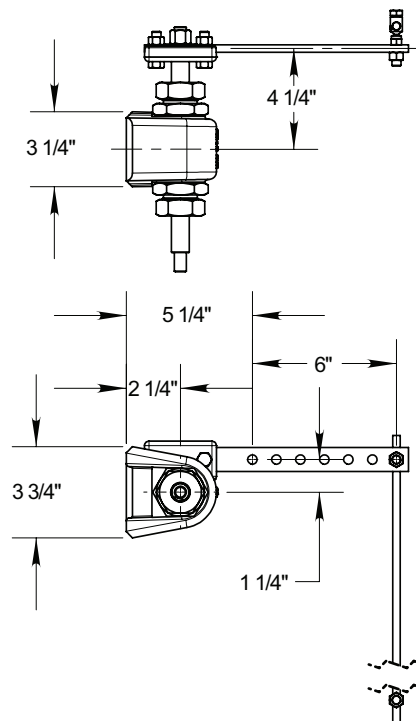
25 TOB



HUTA



50 TOB-S

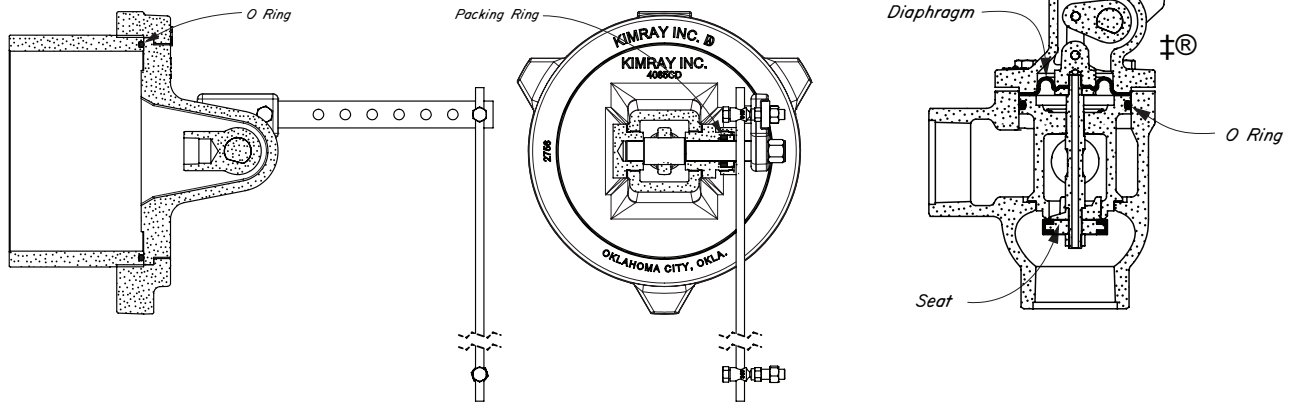


**Table 2 - Seal Options Level Controllers**

Part	Standard Material	Optional Material
O-rings	HSN	FKM, AFLAS®
Diaphragm	HSN	FKM, AFLAS®
Bushing	PTFE	N/A

**Table 3 - Seal Options Trunnion Assemblies**

Part	Standard Material	Optional Material
O-rings	Nitrile	FKM, HSN, AFLAS®



**Table 4 - Seal Specifications**

		NITRILE	HIGHLY SATURATED NITRILE	FKM	AFLAS®	POLY-URETHANE	GYLON
<b>Kimray Suffix</b>		-	HSN	V	AF	P	GY
<b>Resistance</b>	<b>Abrasion</b>	G	G-E	G	G	E	E
	<b>Acid</b>	F	G-E	G-E	E	P	E
	<b>Chemical</b>	F	F	E	E	F	E
	<b>Cold</b>	G	G	P	P	G	E
	<b>Flame</b>	P	P	E	E	P	P
	<b>Heat</b>	G	E	E	E	F	E
	<b>Oil</b>	G-E	E	E	E	G	E
	<b>Ozone</b>	P	G	G-E	E	E	E
	<b>Set</b>	G	G	G-E	P	F	P
	<b>Tear</b>	F	F	F	P	G-E	E
	<b>Water/Steam</b>	F	E	P	G	P	E
	<b>Weather</b>	F	G	E	E	E	E
	<b>CO2</b>	F-G	G	G	G	G	E
<b>H2S</b>	P	F	P	E	G	E	
<b>Methanol</b>	F	E	P	P	P	E	
<b>Properties</b>	<b>Dynamic</b>	G	G	G	G	E	P
	<b>Electrical</b>	F	F	F	G-E	F	E
	<b>Impermeability</b>	G	G	G	G	G	E
	<b>Tensile Strength</b>	G	G-E	G	F	G-E	E
	<b>Temp. Range (°F)</b>	-20° to +225°F	-20° to +250°F	-15° to +400°F	+15° to +450°F	-40° to +180°F	-450° to +500°F
	<b>Temp. Range (°C)</b>	-29° to +107°C	-29° to +121°C	-26° to +204°C	-9° to +232°C	-40° to +82°C	-268° to +260°C
<b>Form</b>	O,S,D	O,S,D	O,S,D	O,S,D	S,D	S,D	

RATINGS: P-POOR, F-FAIR, G-GOOD, E-EXCELLENT

# LEVER OPERATED LIQUID LEVEL CONTROLS

## MATERIAL SPECIFICATION



Table 5 - Level Controller Materials of Construction		
Part Description	Standard Material	Optional Material(s)
Body	Ductile Iron, ASTM A-395	ASTM A-216 WCB,
Stem	ASTM A-582 303SS	316S, ASTM A-213
Plug	Delrin	ASTM A-316
Cage	Delrin	ASTM A-316, A-351
Seat	HSN	FKM
Piston	316S, ASTM A-351	
Packing Box	ASTM A-582 303SS	ASTM A-479 316SS

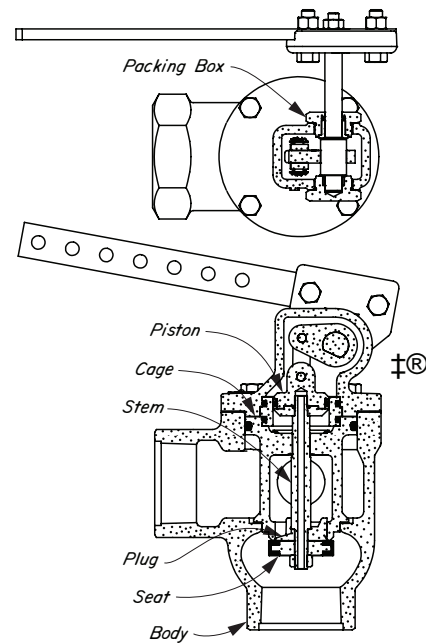


Table 6 - Trunnion Materials of Construction		
Part Description	Standard Material	Optional Material(s)
Bonnet	Ductile Iron	ASTM A216 WCB
Plate	Steel SA - 515 Grade 70 Plate	
Packing Box	Brass with Nitrile/Teflon Packing ASTM B-429	ASTM A-316, ASTM A-479
Shaft	303S, ASTM A-582	ASTM A-316, ASTM A-479
Float Hub	ASTM A-316	ASME SA-351, ASTM A-351
Union Nut	Ductile Iron	ASTM - A395
Weld Neck	8 in. Schedule 100 Pipe ASTM A-106 Grade B	
Lever Hub	Gray Iron, ASTM A-126-B	

