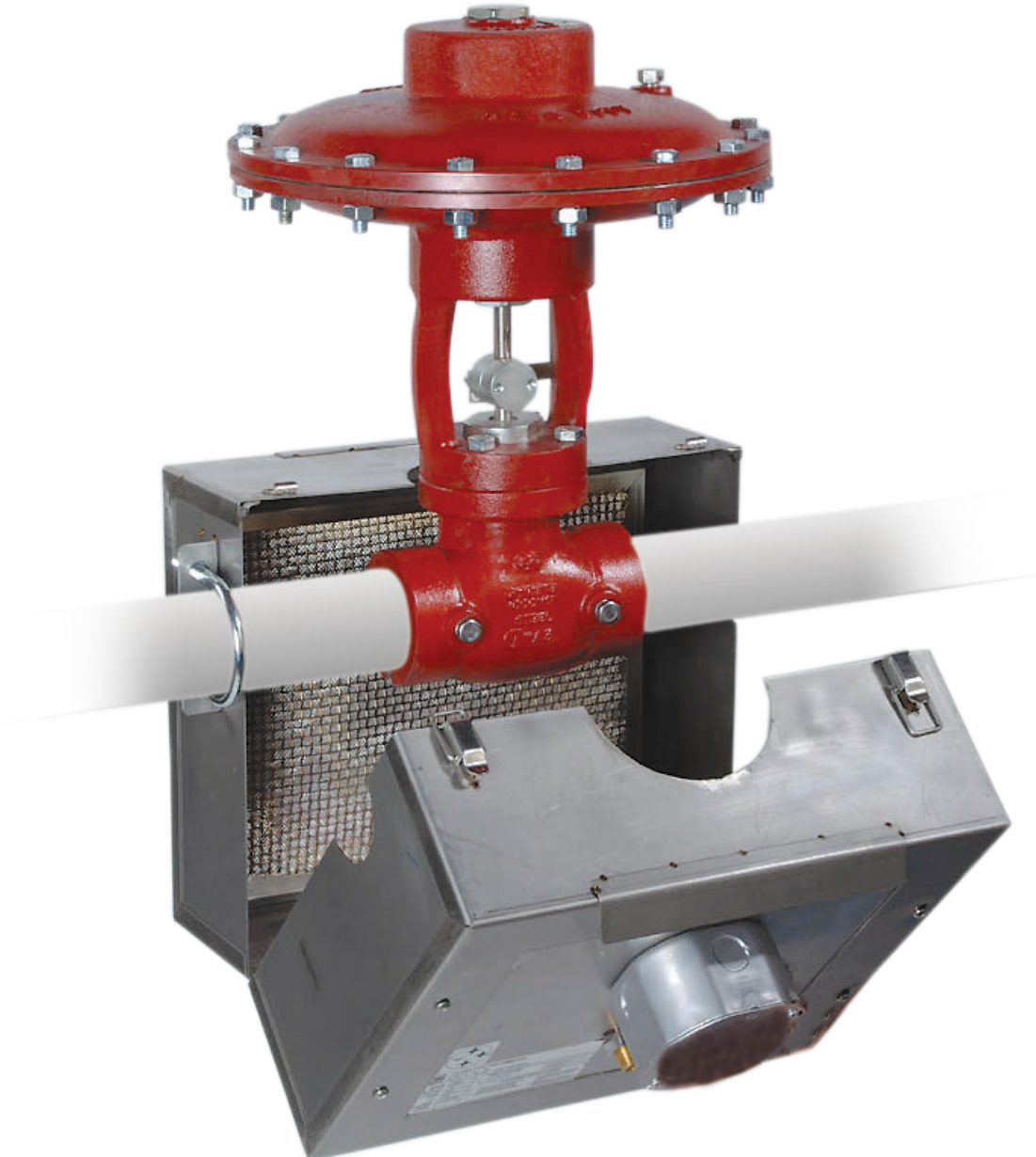


CATCO HEATERS

CATALYTIC HEATERS FOR CLEAN, SAFE, FLAMELESS HEAT



KIMRAY
INC.®

INTRODUCTION

Kimray sells CATCO Catalytic Heaters because it is a product that maintains our high level of quality and the enclosures have been specifically designed for Kimray valves.

HOW IT WORKS

The CATCO heater produces a flameless heat using gas or propane. When the temperature of the catalyst pad is elevated to 250°F the combustible gas will cause a chemical reaction which increases the temperature to 600°-800°F. Since this is below the 1200°-1300°F ignition point of natural gas, it produces a flameless heat that can be safely used where hazardous vapors may exist.

Radiant heat can be focused on the valve or pipeline allowing the operator to direct the heat on the areas most likely to freeze. This increases efficiency, allowing smaller heaters to be used, lowering initial costs and fuel consumption.

SPECIFICATIONS

Enclosure Models:* 70-035: Kimray 2" HPCV
70-050: Kimray 1" HPCV
70-688-2: Kimray 2" Regulator

BTU/hr. Input: 70-035: 500 (P1) or 1000 (P2)
70-050: 2667 (P1) or 5400 (P2)
70-688-2: 3000 (P1) or 6000 (P2)

**Gas Consumption:
(Cu Ft/hr)** 70-035: 5.0 (P1) or 10 (P2)
70-050: 2.7 (P1) or 5.4 (P2)
70-688-2: 3 (P1) or 6 (P2)

Starting Amps: 70-035: 12V (8.3), 120V (0.83), 240V (N/A)
70-050: 12V (5.0), 120V (0.5), 240V (N/A)
70-688-2: 12V (8.3), 120V (.83), 240V (N/A)

* Also available for pipeline, drip pot, flanged valves and instrument gas heater.

LOWER FUEL CONSUMPTION

With no moving parts, the heaters will operate indefinitely with a clean fuel supply.

APPROVED FOR HAZARDOUS ENVIRONMENTS

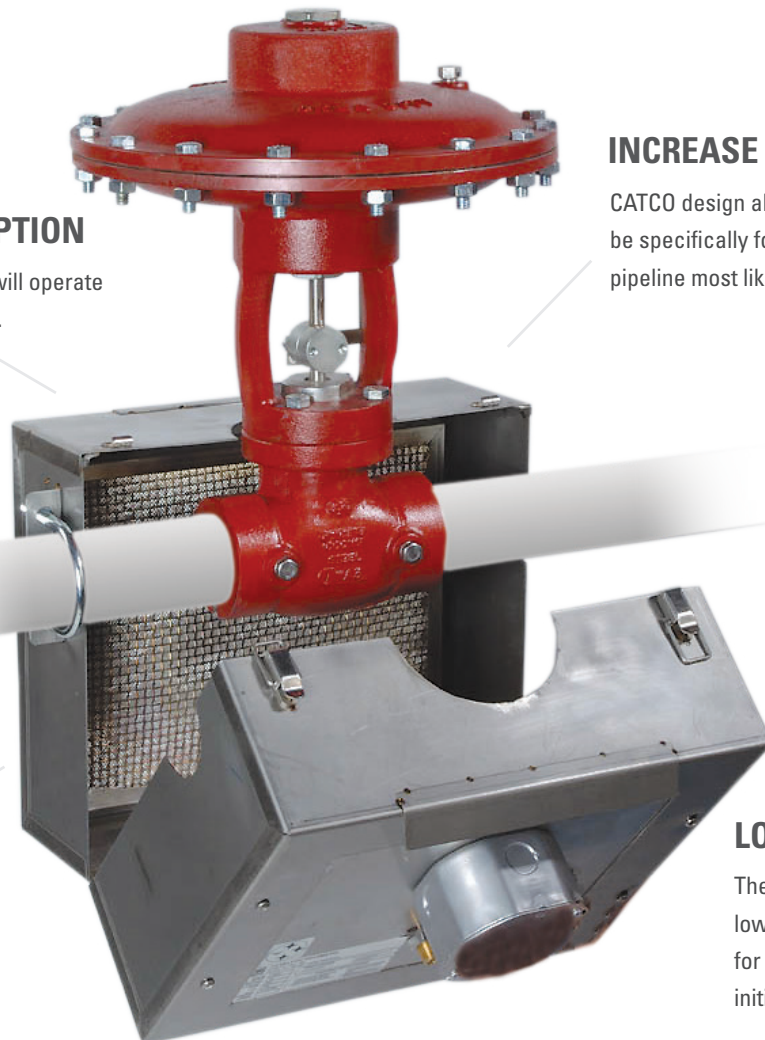
The surface of the heater reaches a maximum of 700°F, allowing it to be approved for hazardous environments.

INCREASE EFFICIENCY

CATCO design allows radiant heat to be specifically focused on the valve or pipeline most likely to freeze.

LOWER INITIAL COST

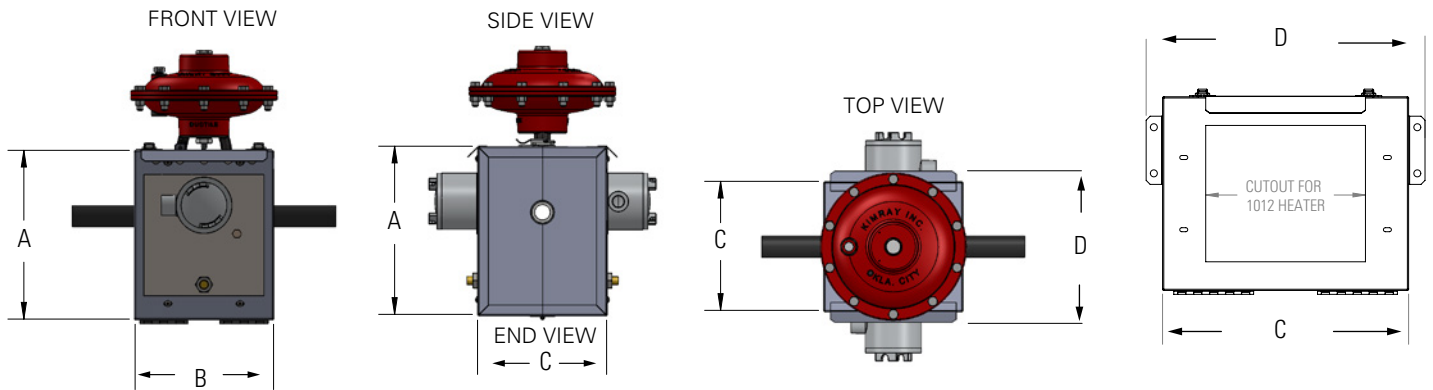
The heater's efficiency and low fuel consumption allow for smaller units with a lower initial cost.



DIMENSIONS

| Models | A | B | C | D | E | Weight |
|----------|---------|---------|--------|---------|---------|--------|
| 70-035 | 12-1/8" | 15-3/8" | 9-5/8" | 11-5/8" | 17-1/2" | 8 . |
| 70-050 | 10-1/2" | 8-3/4" | 8-1/8" | 9-3/8" | N/A | 5 lbs. |
| 70-688-2 | 11-1/2" | 15" | 14" | N/A | 17" | 7 lbs. |

6" x 12" Heater 2 lbs.

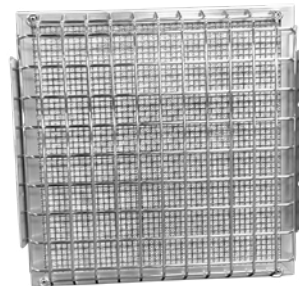
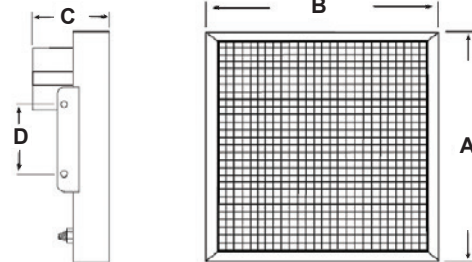


HEATER PAD

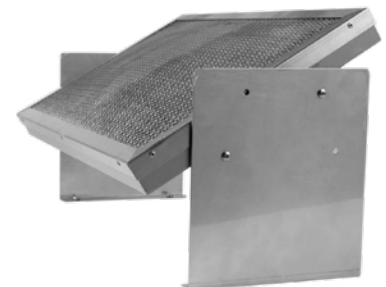
Dimensions (inches)

with standard junction box: 70-035: A: 10-1/8, B: 13-1/4, C: 3-1/2, D: 4-1/2
 70-050: A: 9-1/4, B: 8-1/8, C: 3-1/2, D: 4-1/2
 70-688-2: A: 6-1/8, B: 12-1/8, C: 3-1/2, D: 5

| Features | BTU/Hr | Gas Consumption |
|---------------------------|--------|-----------------|
| Standard | 1500 | 1.5 |
| | 2667 | 2.7 |
| | 3000 | 3 |
| | 5000 | 5 |
| Thrm. Cplr/Shut-Off Valve | 1500 | 1.5 |
| | 2500 | 2.5 |
| | 2667 | 2.7 |
| | 3000 | 3 |
| | 5000 | 5 |
| | 6000 | 6 |
| | 12000 | 12 |



Face Grille



Wallmount Brackets

ACCESSORIES

Wallmount brackets: KSC10-010

½" EP Junction Box: Single Outlet (KSC20-005)
Double Outlet (KSC20-006)

16' Pigtail: 12V Standard (KSC20-020)
12V Explosion Proof (KSC20-021)
120V Explosion Proof (KSC20-022)

Jumper: 12V (KSC20-025)
120V (KSC20-026)

Low Temperature Shut-off Valve Baso H17: ¼" x ¼" Connection (KSC30-006)

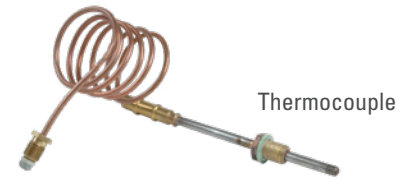
Thermocouple with Nut: Type K 14.36" lg.(KSC30-010)

Ball Valve: ¼" Stainless Steel (KSC30-035SS)

Thermostat Control: ¼" NPT 60-250°F (KSC40-030)

Regulator: ¼" NPT/250 psi inlet (KSC50-005)

Regulator Manifold: Stainless Steel (KSC55010SS)



Thermocouple



Regulator



Low temperature shut-off valve



16" Pigtail

WHO WE ARE

Kimray designs and manufactures oil and gas control products. Based on more than 65 years of pioneering product development, we provide products and services that are reliable, smart and inventive. We generate meaningful solutions by staying curious and engaging in customers' needs. Our product ideas are fueled by a deep desire to make a difference that is both personal and unique to the customer.

We have made it our life's work to provide products and services that are positively impactful. Through the years, this

pursuit has built strong relationships. Our customers have known that buying from Kimray is about much more than the product. The relationships between Kimray representatives and our customers extend from before the sale through the life of the product. Those relationships, along with quality Kimray products, are the result of a company striving for excellence for our customers, our company and our community.

Visit Kimray.com to learn more about our company and the products we create.