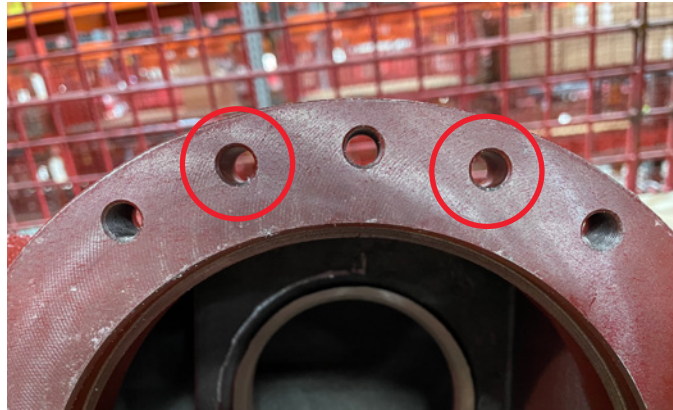


ADDITIONAL LOCATING HOLES FOR 3" - 6" REGULATORS

This product notice is to inform you that we have begun adding additional locating holes to the top flange of our 3"-6" regulator bodies.

The locating holes will allow us to improve our manufacturing efficiency & thread integrity

These holes will be non-threaded and will allow us to position the casting during the machining process without damaging or having to re-chase threaded holes.



This change is being made to improve the quality and safety of our manufacturing processes. It will not affect the function of the valve.

We wanted to inform you of this change so there is no confusion as to the purpose of the holes, since there will be no threads or bolts to accompany them.

This change is already in place on the 3" ductile regulator bodies and we will be working to add it to the other large sized regulator bodies as well.